

Splice Foot X & XL

Patent Pending



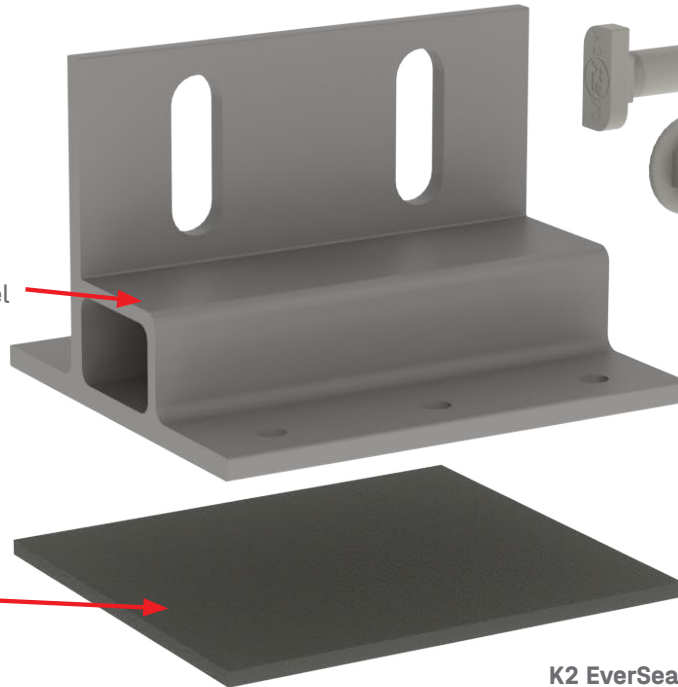
DATA SHEET

Self-Tapping Screws

- / Self-sealing; no sealant required
- / Self-tapping; no pilot holes required
- / 2 screws included per mount

Rail Shelf

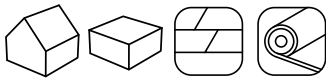
- / Allows for easier rail support
- / Aligns CrossRail T-Bolt channel



K2 EverSeal

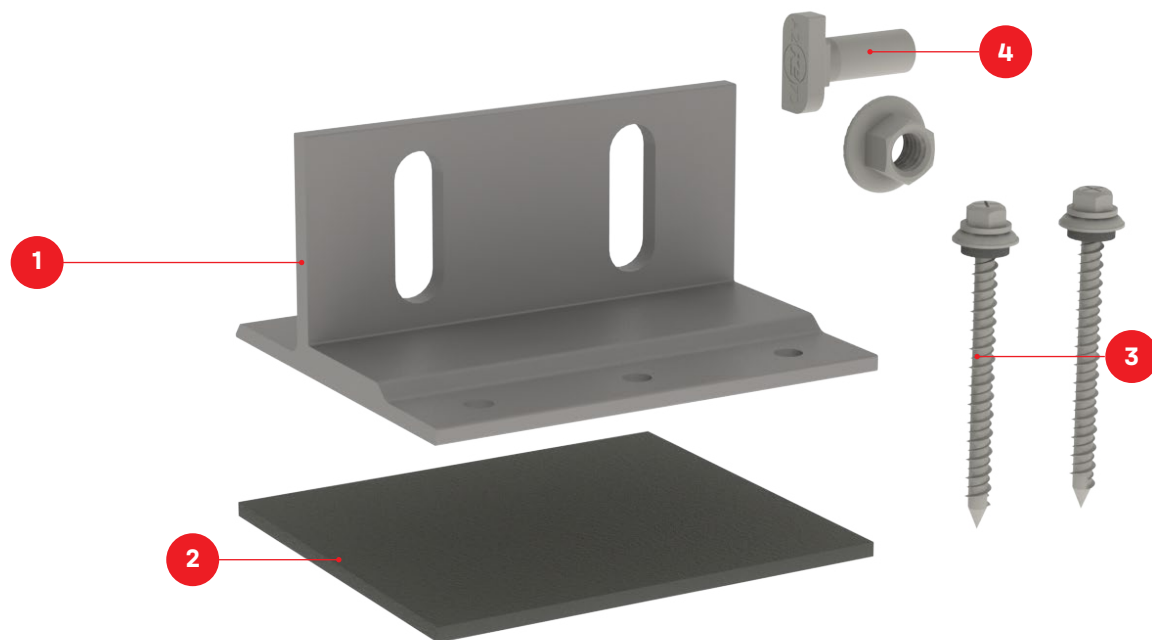
- / Pre-installed butyl flexible flashing
- / 30+ years of proven water sealing technology
- / TAS 100(A) and Wind Driven Rain tested and approved

PRODUCT FEATURES



- / All-in-one mount and splice foot
- / K2 EverSeal technology
- / 30+ years of proven water sealing technology on asphalt
- / Self drilling lag screws = less tools needed
- / Optimized for CrossRail systems and components
- / No L-Foot needed
- / T-Bolt hardware included

TECHNICAL DATA SPLICE FOOT X



Splice Foot X

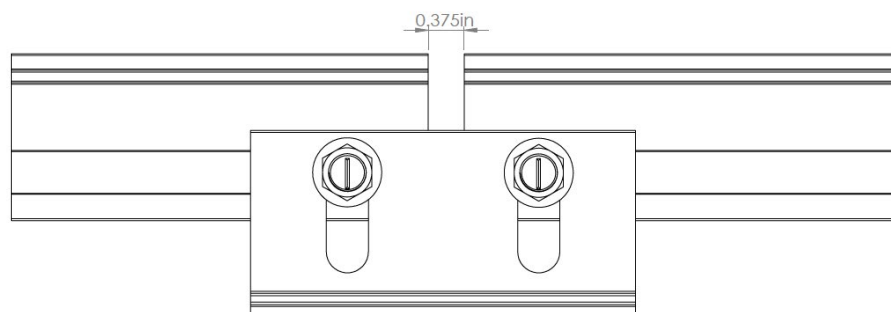
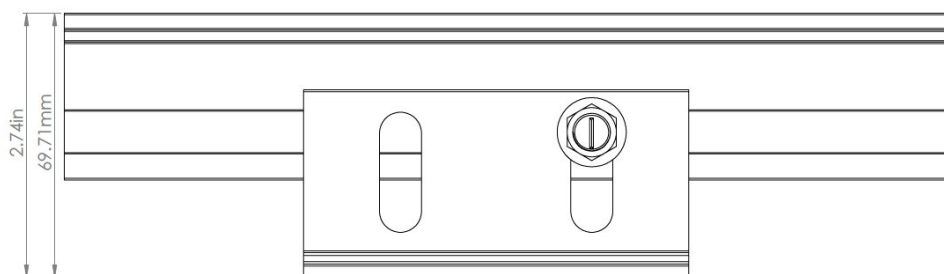
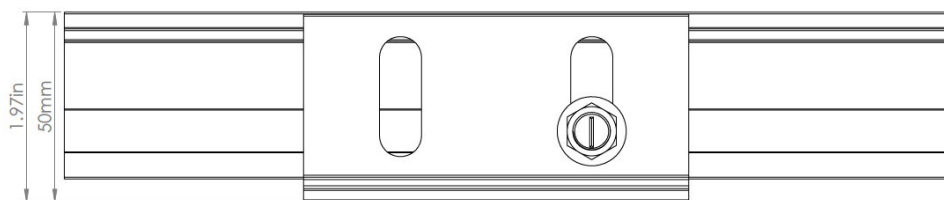
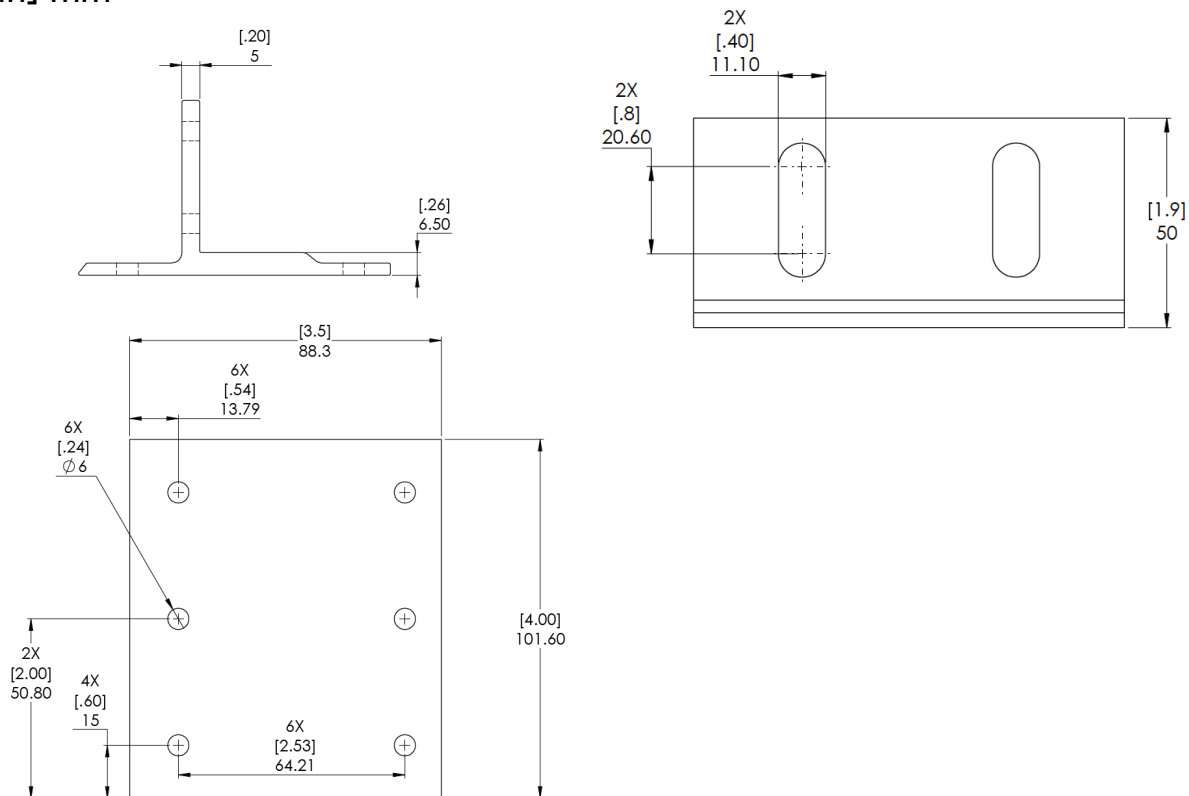
Item Number	Description	Part Number
1	Splice Foot X	4000113 Splice Foot X Kit, Mill
2	K2 EverSeal-	
3	Splice Foot Screw, M5×60	
4	T-Bolt & Hex Nut Set	

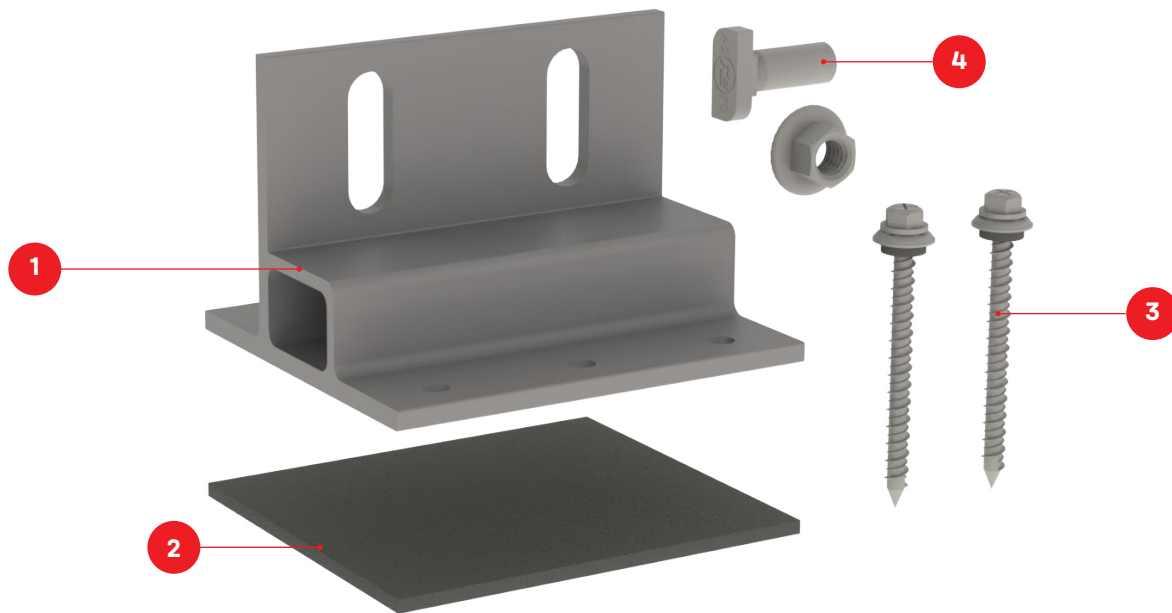
	Splice Foot X
Roof Type	Composition shingle, EPDM, TPO, Bitumen, Asphalt
Material	Aluminum with stainless steel hardware
Finish	Mill
Roof Connection	M5 × 60 lag screws
Code Compliance	UL 2703
Compatibility	CrossRail 44-X, 48-X, 48-XL, 80

TECHNICAL DATA SPLICE FOOT X



Units: [in] mm





Splice Foot XL

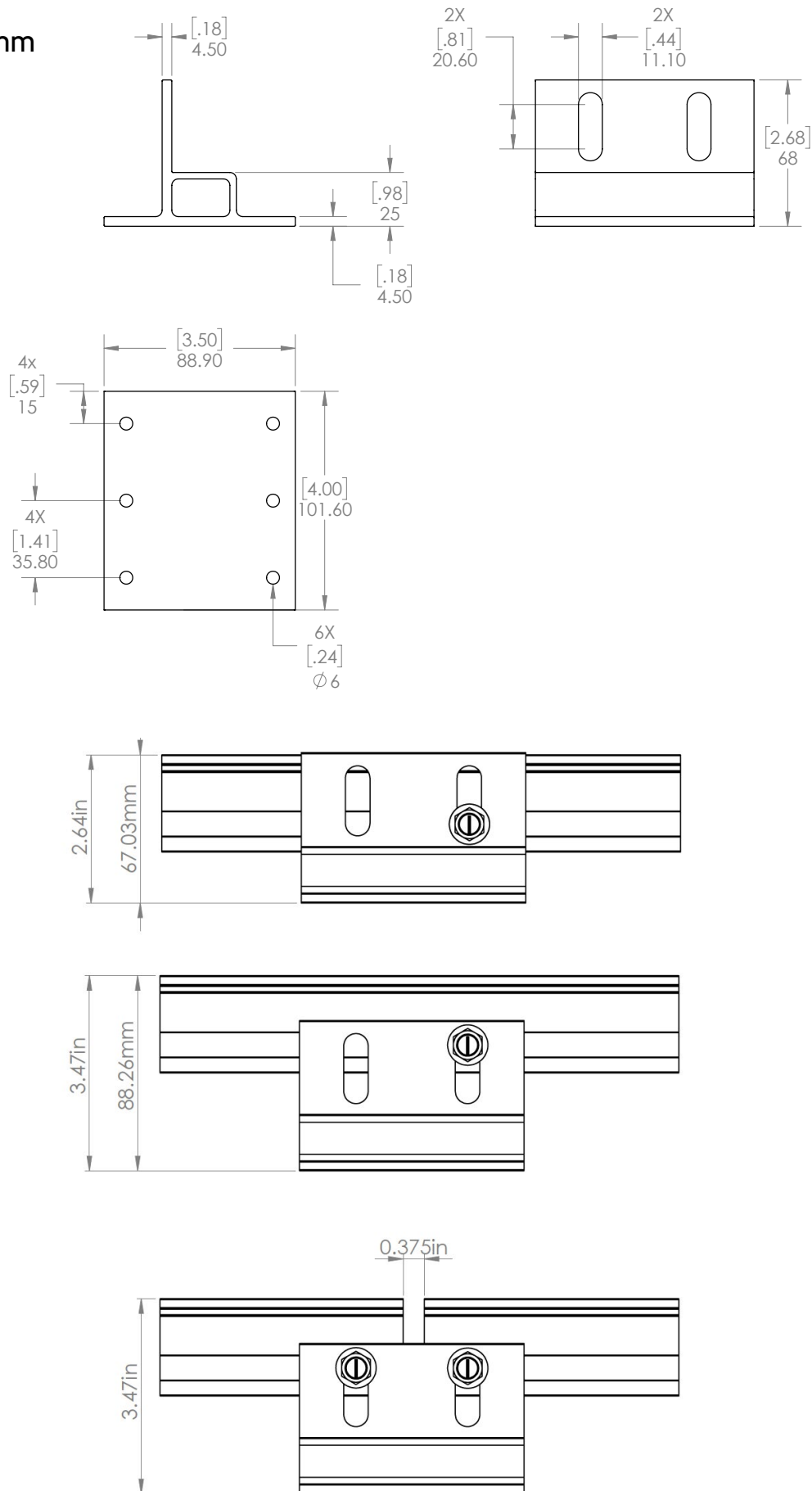
Item Number	Description	Part Number
1	Splice Foot XL	4000162 Splice Foot XL Kit, Mill
2	K2 EverSeal	
3	Splice Foot Screw, M5×60	
4	T-Bolt & Hex Nut Set	

	Splice Foot XL
Roof Type	Composition shingle, EPDM, TPO, Bitumen, Asphalt
Material	Aluminum with stainless steel hardware
Finish	Mill
Roof Connection	M5 × 60 lag screws
Code Compliance	UL 2703
Compatibility	CrossRail 44-X, 48-X, 48-XL, 80

TECHNICAL DATA SPLICE FOOT XL



Units: [in] mm

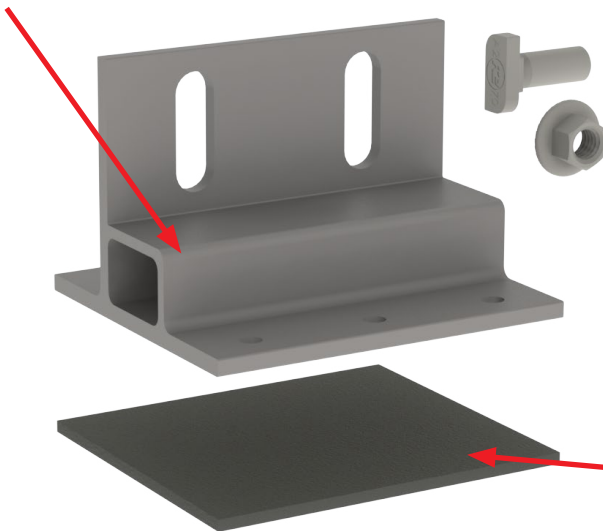


CrossRail System & Splice



Rail Shelf

- / Allows for easier rail support
- / Aligns CrossRail T-Bolt channel

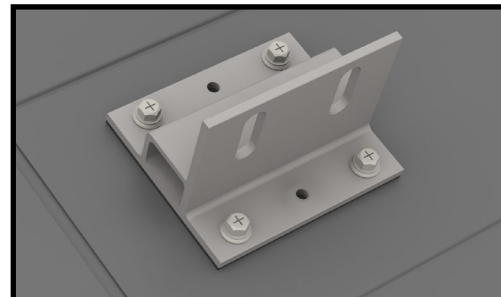
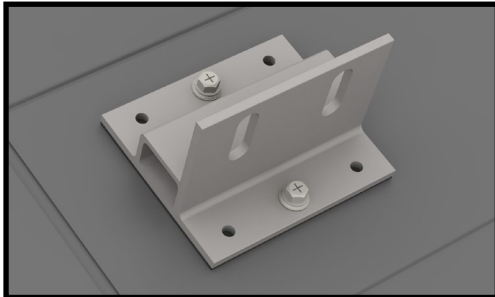


Self-Tapping Screws

- / Self-sealing; no sealant required
- / Self-tapping; no pilot holes required
- / 2 screws included per mount

K2 EverSeal

- / Pre-installed butyl flexible flashing
- / 30+ years of proven water sealing technology
- / TAS 100(A) and Wind Driven Rain tested and approved

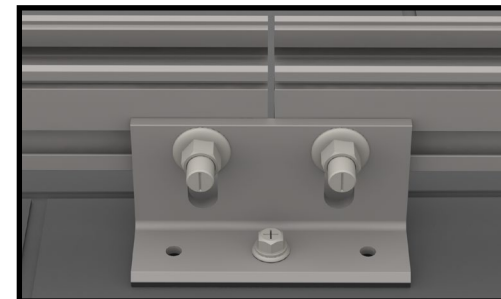
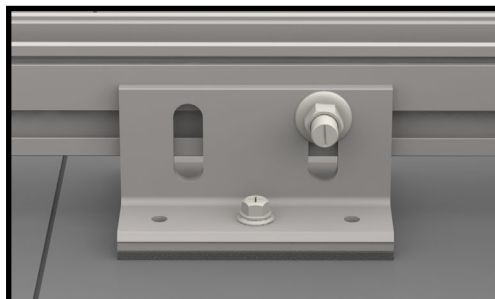


Rafter Attached

- / Best as primary attachment method
- / 2 screws required (included) in center holes
- / Self-tapping and self-sealing

Deck Attached

- / Best as secondary attachment method
- / 4 screws required in corner holes
- / Alternative to rafter connection



Installing One Rail to Splice Foot

- / Only requires one T-Bolt set (included)
- / No L-Foot required
- / Torque to 25.8 ft-lbs (35 Nm)

Installing Two Rails to Splice Foot

- / Requires T-Bolt sets
- / Additional T-Bolt set not included
- / Torque to 25.8 ft-lbs (35 Nm)

CrossRail System & Splice Foot



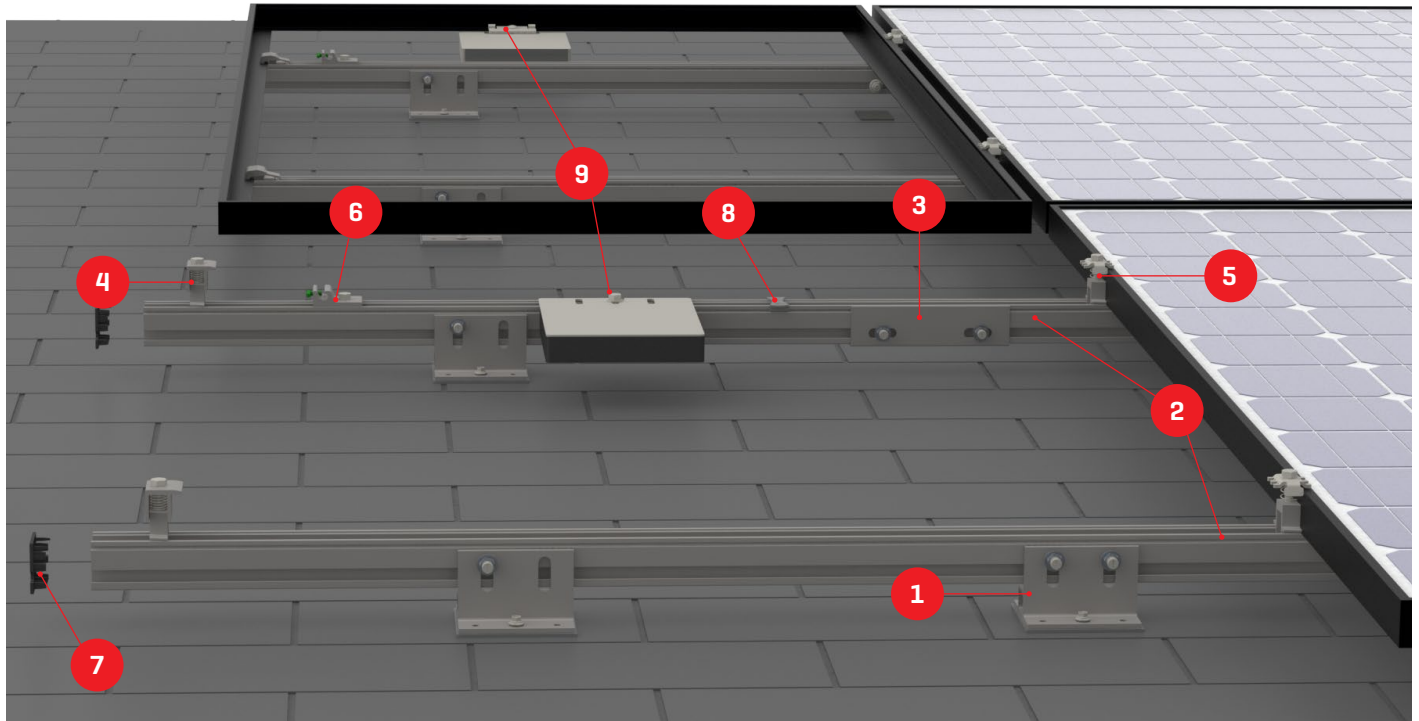
Product Sheet



Technical Sheet



Assembly

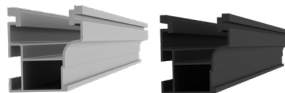


- 1** 4000113
4000162



Splice Foot X or XL

- 2** 4000719, 4000720
4000721, 4000722



CrossRail 44-X, 48-X or 48-XL

- 3** 4000051/4000052
4000385/4000386



Structural Rail Connector
CR 44-X or CR 48-X/48-XL

- 4** 4000197/4000233
4000050-B



K2 End Clamp or Yeti Clamp
30 - 50 mm module frame height

- 5** 4000229/4000230
4000251/4000251



K2 Mid Clamp Set, M8×40 / 60
30 - 47 mm module frame height

- 6** 4000006-H



K2 Ground Lug

- 7** 4000176
4000431



End Cap
CR 44-X or CR 48-X/48-XL

- 8** 4000069
4000382
4005394



Wire Management
TC Wire Clip, SunRunner Clip,
Omega Clip

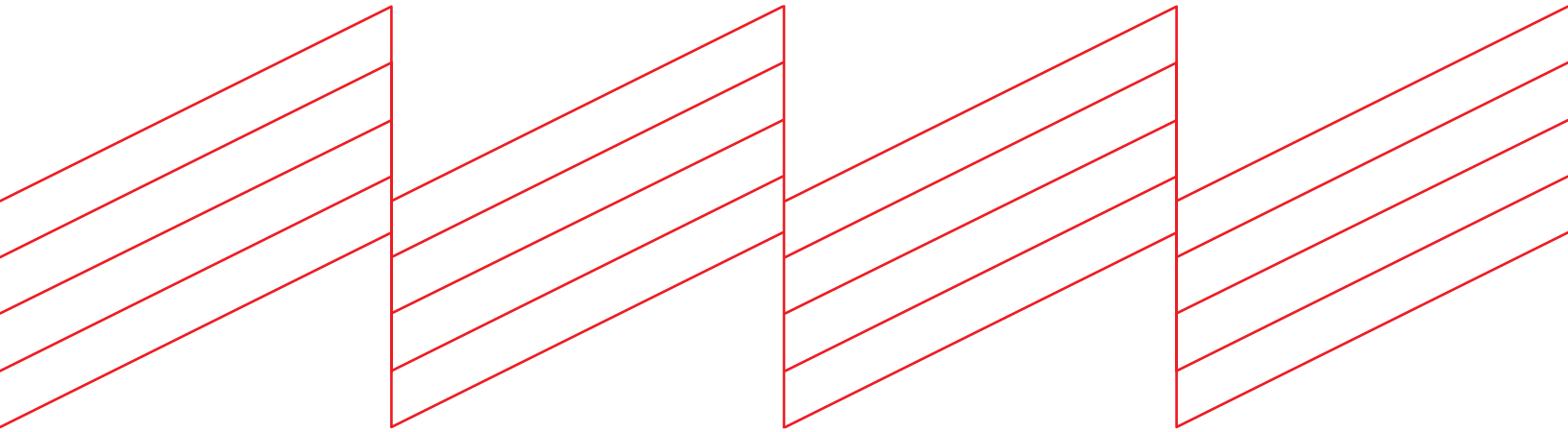
- 9** 4000083
4000629-H



MLPE Mounting Kits
MLPE Module Frame Mount,
CR Microinverter & Opt Mount Kit



Connecting Strength



K2 Systems, LLC

4665 North Ave. Suite I • Oceanside, CA 92056 •
USA +1.760.301.5300 • infous@k2-systems.com
www.k2-systems.com

Splice Foot X & XL Data Sheet V1 | 1023 • Subject to change
Product illustrations are exemplary and may differ from the original.