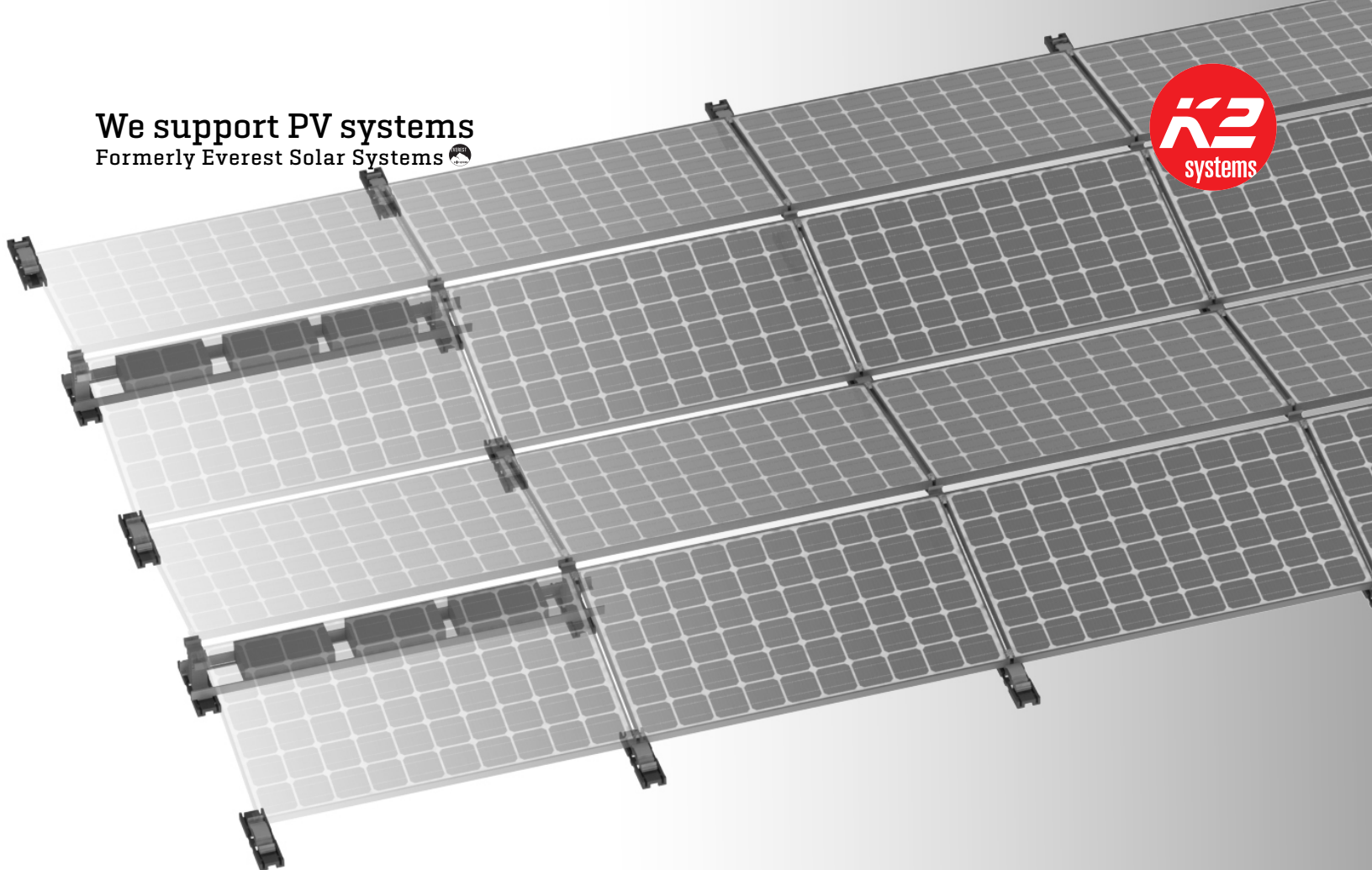


We support PV systems
Formerly Everest Solar Systems 



D-Dome Railless² System

PRODUCT SHEET

- ▶ High quality, German-engineered system optimized for residential installations
- ▶ Innovative, dual-tilt, low ballast system suitable for all orientations
- ▶ Fast installation with minimal component count result in low total installed cost
- ▶ 10° elevation angle
- ▶ High energy density
- ▶ 100% code compliant, structural validation for all solar states
- ▶ Wind tunnel tested by leading structural aerodynamic labs
- ▶ Reduced freight - it ships in a box

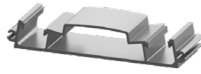


Components



Dome Peak R²

Part Number	Description
4000592	Dome Peak R ²



Dome Base R²

Part Number	Description
4000593	Dome Base R ²



Roof Protection Mat R²

Part Number	Description
4000594	Dome Roof Protection Mat R ²



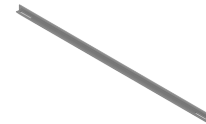
Dome Mid Clamp

Part Number	Description
4000603	Dome MC Silver, SS UL2703+ 30-33mm
4000604	Dome MC Silver, SS UL2703+ 34-39mm
4000605	Dome MC Silver, SS UL2703+ 40-44mm
4000606	Dome MC Silver, SS UL2703+ 45-50mm



Aluminum End Clamp

Part Number	Description
4005344	CrossRail EC Silver, AL 32-33mm
4005169	CrossRail EC Silver, AL 34-36mm
4005290	CrossRail EC Silver, AL 37-38mm
4005170	CrossRail EC Silver, AL 39-41mm
4005291	CrossRail EC Silver, AL 42-44mm
4005171	CrossRail EC Silver, AL 45-47mm
4005292	CrossRail EC Silver, AL 48mm
4005172	CrossRail EC Silver, AL 49-50mm



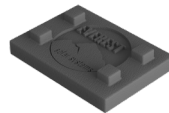
Dome Porter R²

Part Number	Description
4000568	Dome R ² Ballast Porter, 61-67 inches
4000569	Dome R ² Ballast Porter, 68-74 inches
4000570	Dome R ² Ballast Porter, 76.8-83.2 inches



Dome Corner Strut R²

Part Number	Description
4000637	Dome R ² Corner Strut



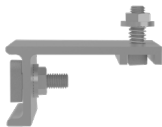
Roof Spacer Mat

Part Number	Description
4000636	Roof Spacer Mat R ²



ILSCO Lug

Part Number	Description
4000960	ILSCO, SGB-4, Lug



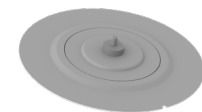
Dome Microinverter & Opt Mount Kit

Part Number	Description
4000646	Dome Microinverter & Optimizer Mounting Kit



Anchor Bracket

Part Number	Description
4000639	Anchor Bracket for Porter Kit



Anchors

Part Number	Description
4000335	OMG PowerGrip Plus
4001442	Eco Fasten Eco65



Omega Wire Management Clip

Part Number	Description
4005394	Omega Wire Management Clip