

# The South Face System

## PRODUCT SHEET

- ▶ South facing ballasted system optimized for US market with optional anchoring
- ▶ Mats have built in patented feature that accounts for thermal expansion
- ▶ Sliding, self-aligning clamp allows for adjustable inter-row spacing
- ▶ Array density can be optimized per job
- ▶ Module rests on hook without need for a clamp during installation
- ▶ Stackable for shipping
- ▶ Fast installation with minimal component count result in low total installed cost
- ▶ Can be installed in landscape or portrait orientation



# Components



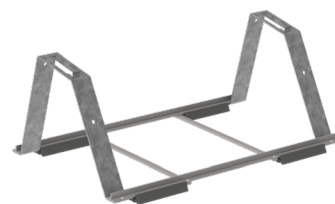
Ridge

Part Number	Description
4000192	South Face Ridge



Valley

Part Number	Description
4000158	South Face Valley



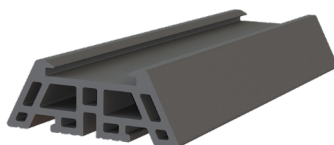
Summit

Part Number	Description
4000159	South Face Summit



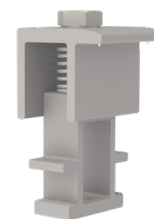
SF Anchor Bracket

Part Number	Description
4000194	South Face Anchor Bracket



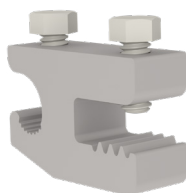
SF Mat/Spacer Pad

Part Number	Description
4000193	South Face Mat/Spacer Pad



K2 End Clamp, Set

Part Number	Description
4000197	K2 End Clamp Set, Mill
4000233	K2 End Clamp Set, Dark



IlSCO Lug

Part Number	Description
4000960	ILSCO, SGB-4



MLPE Module Frame Mount

Part Number	Description
4000083	MLPE Module Frame Mount



SF, K2 Conduit Clamp, Kit

Part Number	Description
4000278	SF, K2 Conduit Clamp, Kit



Everest Ground Lug, 13mm Hex Set

Part Number	Description
4000006-H	Everest Ground Lug, 13mm Hex Set