

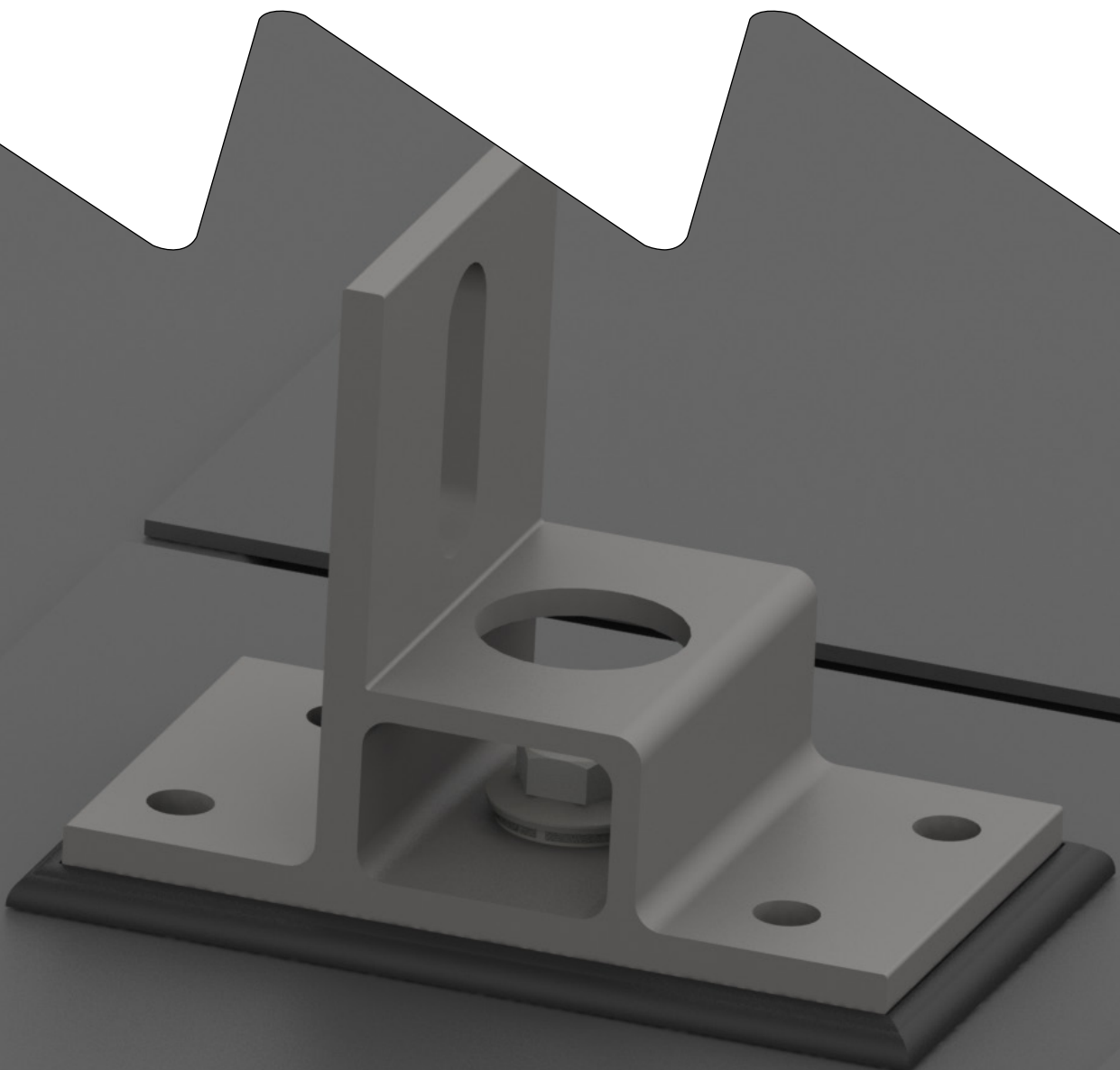


Connecting Strength

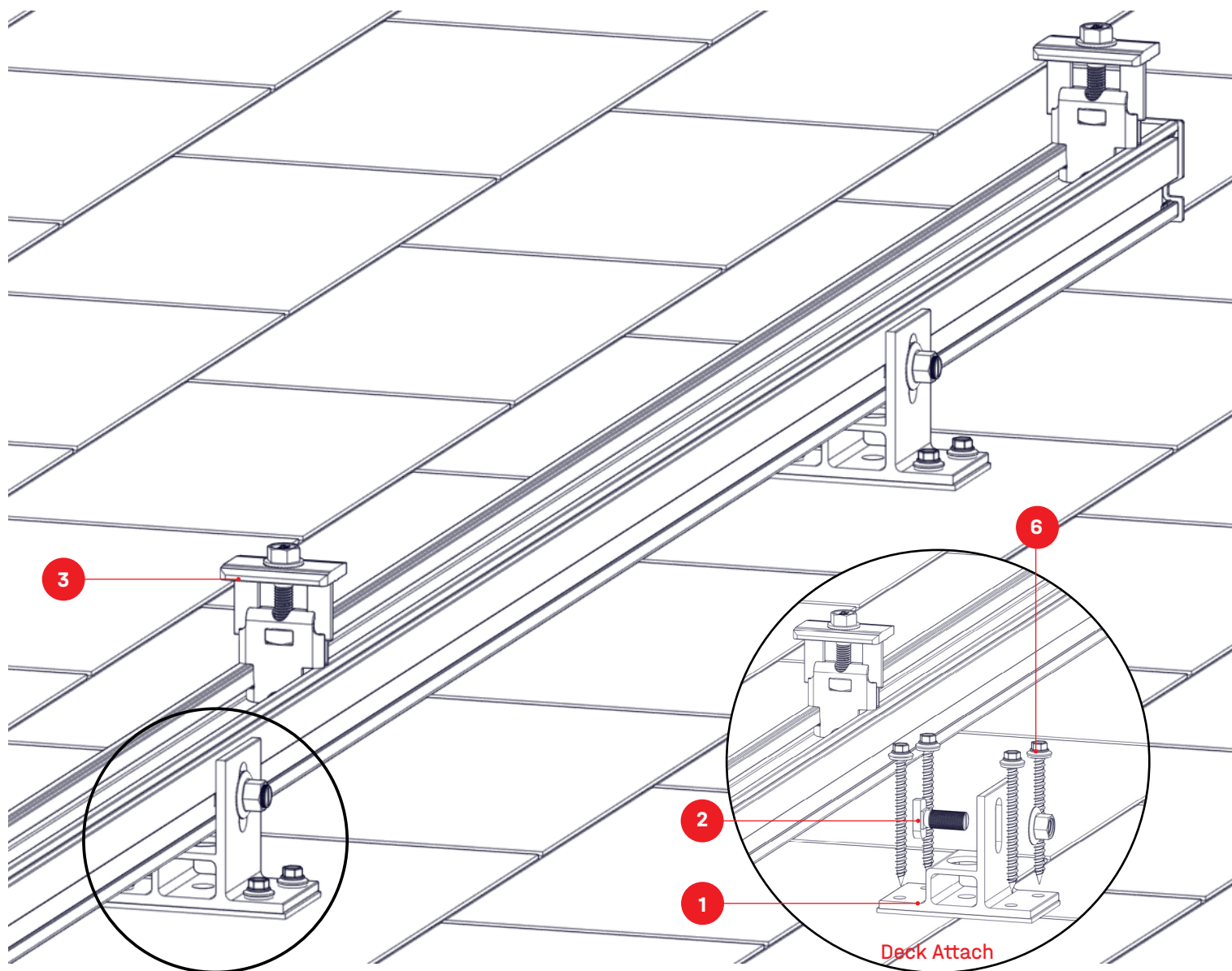
K2 Flex Foot



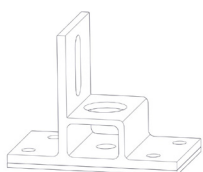
QUICK GUIDE



Components

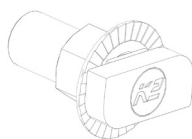


1 4000718/4000818



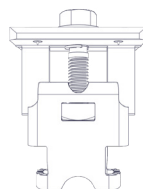
K2 Flex Foot

2 4000048



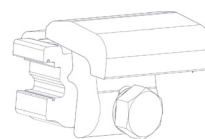
13x25mm T-Bolt Kit

3 4000135/4000145

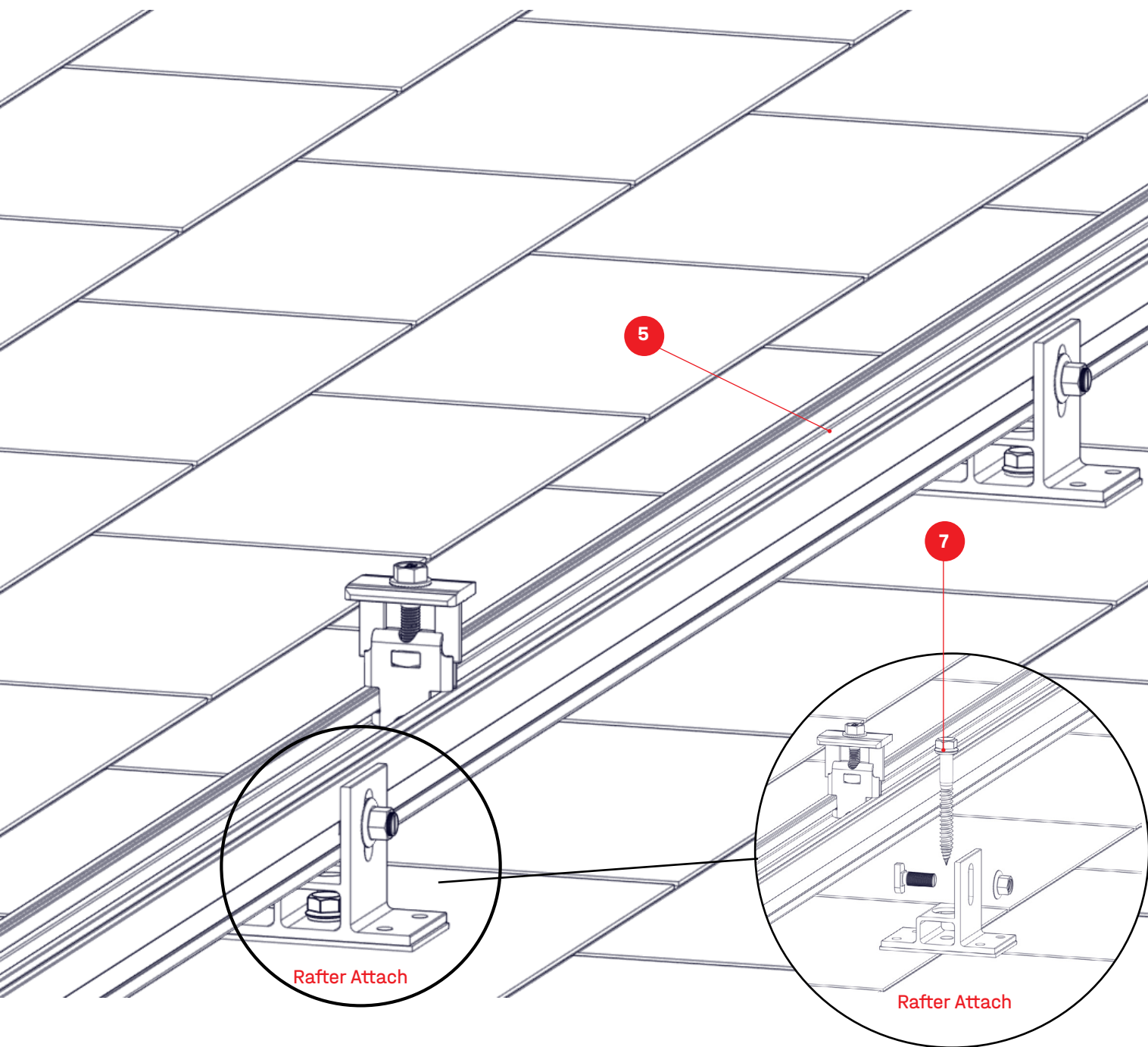


K2 Cross Clamp Set, Mill/Dark

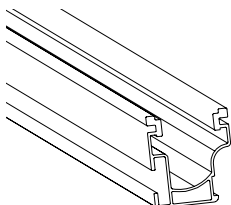
4 4000050-H



Yeti Clamp 2.0, Set



4.1 Multiple PNs



CrossRail
44-X shown & PNs listed
Works with all CR profiles

5 4000310



DR #14 × 3" × 5/16 Hex Head Screw
Used to install to the decking with
Flex Foot

6 Multiple PNs



Fastener options up to 3/8"

Technical Note



- / Proper torque values for a wood screw will vary depending on the rafter and/or deck characteristics; hardness, age, and moisture of the wood. Tighten the splice foot screws until the conical washer stops rotating.
- / Stainless hardware is soft and if dry torqued too quickly it may cause the nut and bolt to seize.
- / K2 Systems recommends all stainless steel threads be lubricated. This will make it easier to tighten nuts to bolts, avoid galling, and facilitate adjustments before the nut is properly torqued. Therefore, avoid the use of an impact driver.

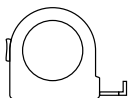
Torque Overview

- / M10 T-Bolts: 25.8 ft-lb (35 Nm)

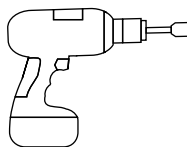
Tools Overview



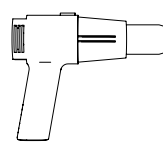
Chalk Line
≥ 3.0 m



Tape Measure
≥ 6.0 m



Drill



Heat Gun



Torque Wrench
6 - 35 Nm
(4.5 - 22.2 lb-ft)



13mm Socket

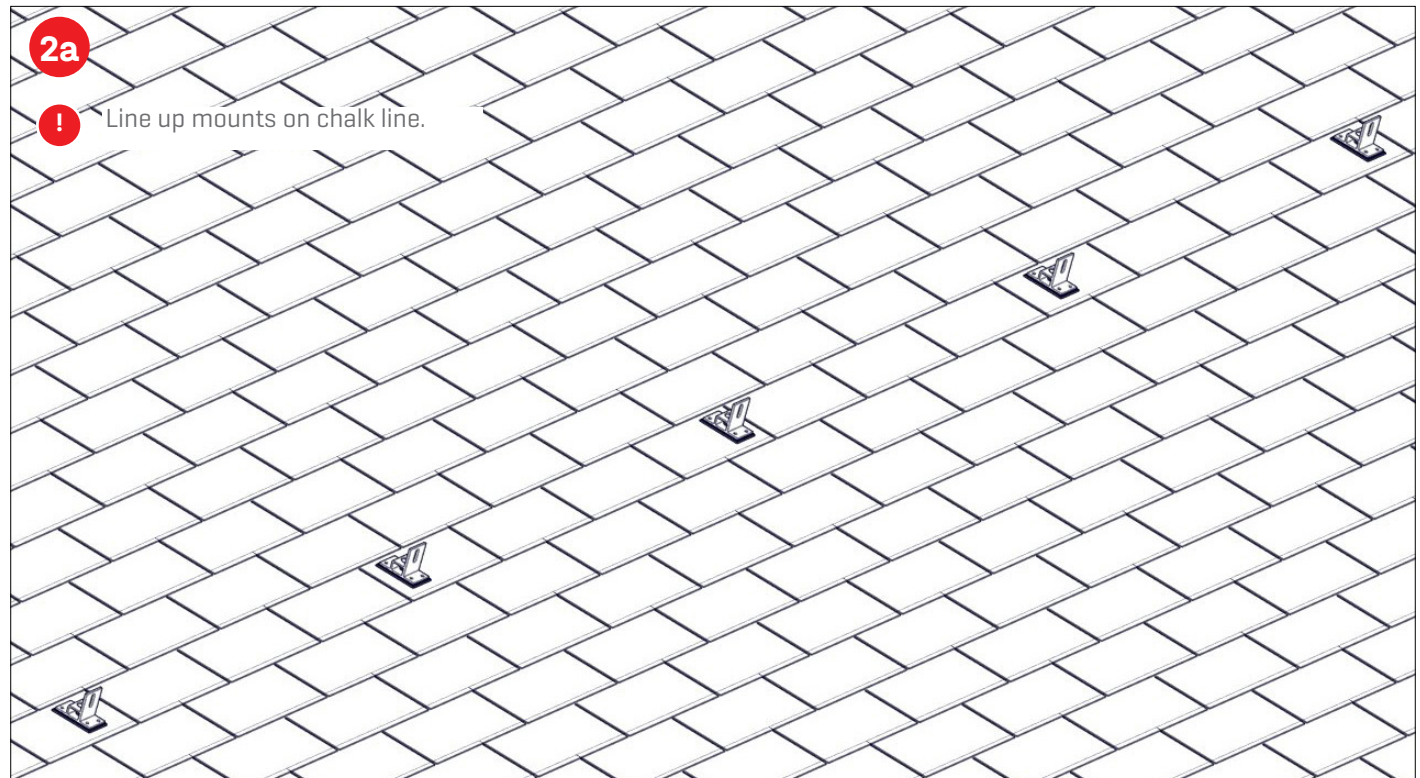
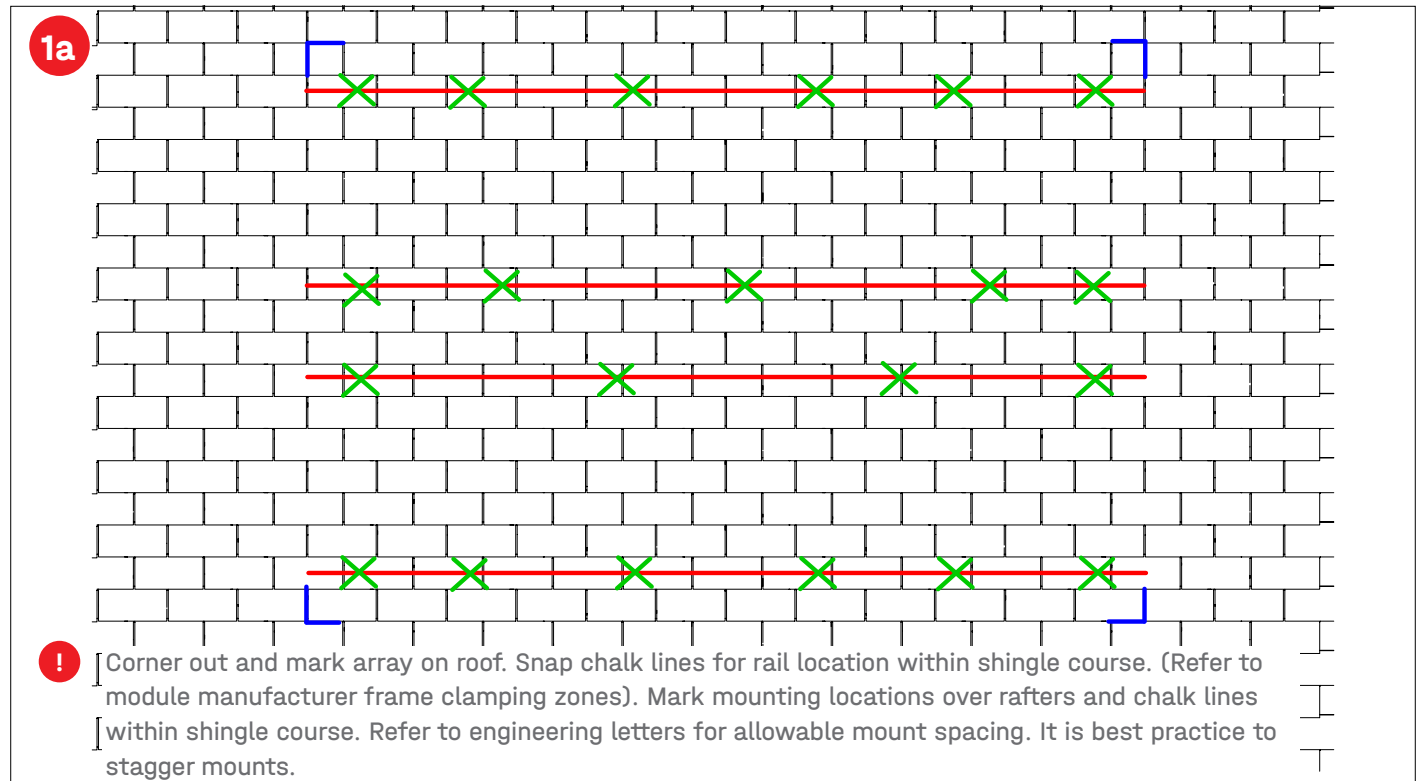


1/4" Nut Driver

Assembly



Part A: Marking the array and mounting locations



Part B: Mount Placement and Installation for Rafter Connection

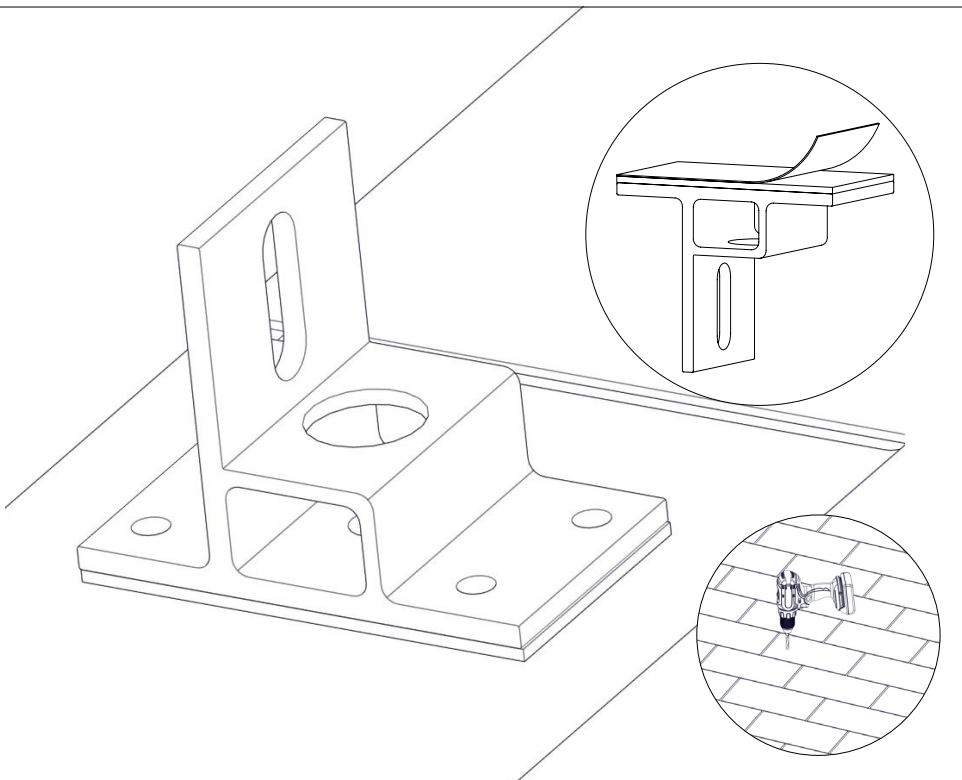


To maintain flashing performance, avoid installation when the temperature of the roof and/or butyl is below 22F or above 176F. K2 EverSeal must be installed on a dry surface.

1b



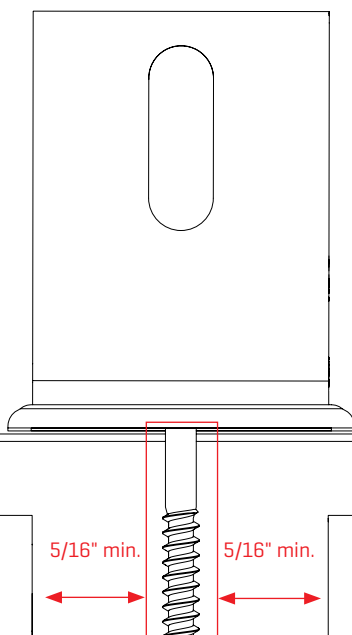
Locate the rafter and clean roofing surface for mount placement. Drill your pilot hole into the rafter using a 9/64" drill bit. Peel back protective paper from butyl, and stick down mount on a single shingle course with the center hole lining up over the rafter. Position all mounts in the same direction with the rail shelf towards the ridge. Drive chosen lag screws into the rafter until the conical washer is flat and not concaved, providing a positive seal. Do not over torque.



2b



The distance from the edge of the rafter and the wood screws must be at least 5/16" from the edge. NOTE: Minimum Edge Distance = 1.5D Where D is the diameter of the screw. NOTE: The screw shall hit the area that is marked by the red box.



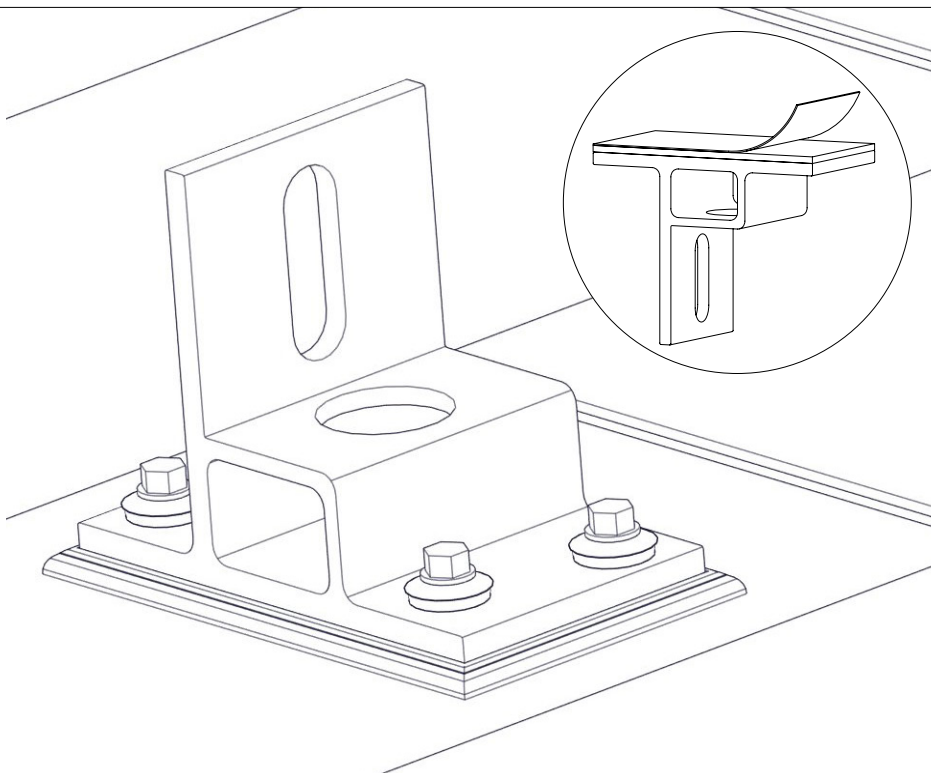
Part C: Mount Placement and Installation for Deck Connection



! To maintain flashing performance, avoid installation when the temperature of the roof and/or butyl is below 22F or above 176F. K2 EverSeal must be installed on a dry surface.

1c

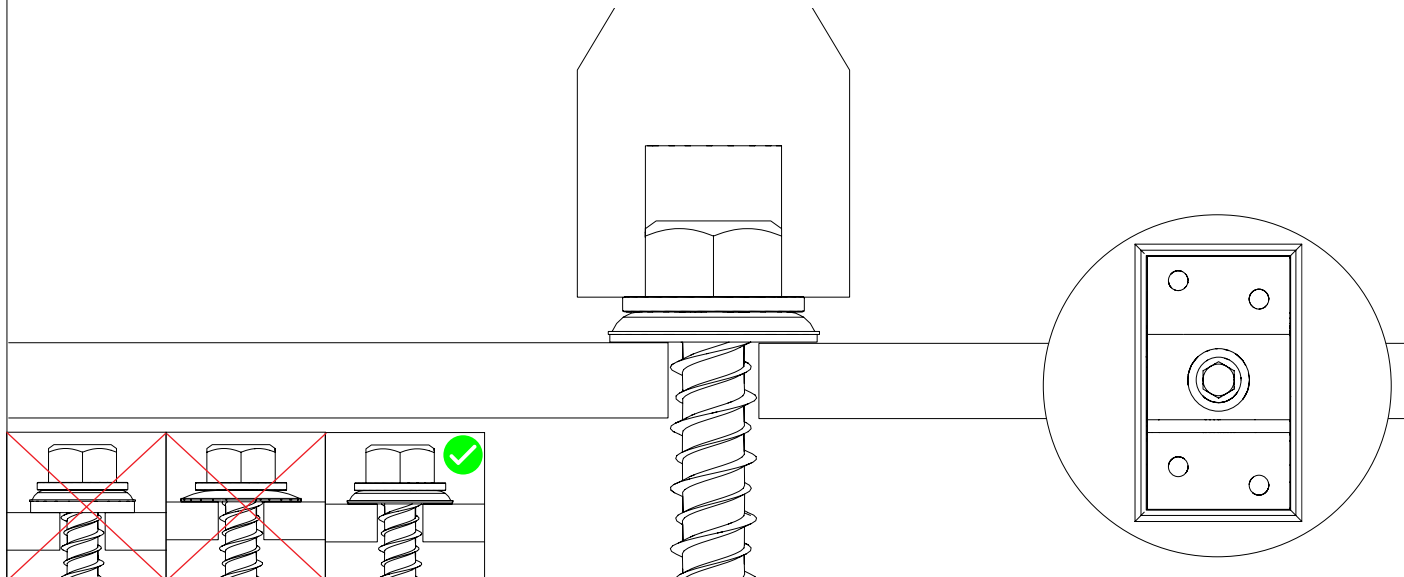
! For deck attachments, follow steps in B2, but only use Splice Foot screws in the four corners of the mount. When possible always attach mounts to the rafter and only use deck attached as a secondary option when rafters are not within mounting zones for the array. Follow K2 engineered calculations and span charts for deck attachments. Ensure that the mount faces toward the ridge of the roof. When deck attaching check for positive engagement into plywood and avoid plywood seams. It should be tightened until the conical washer stops rotating.



Part D: Ensuring Proper Installation

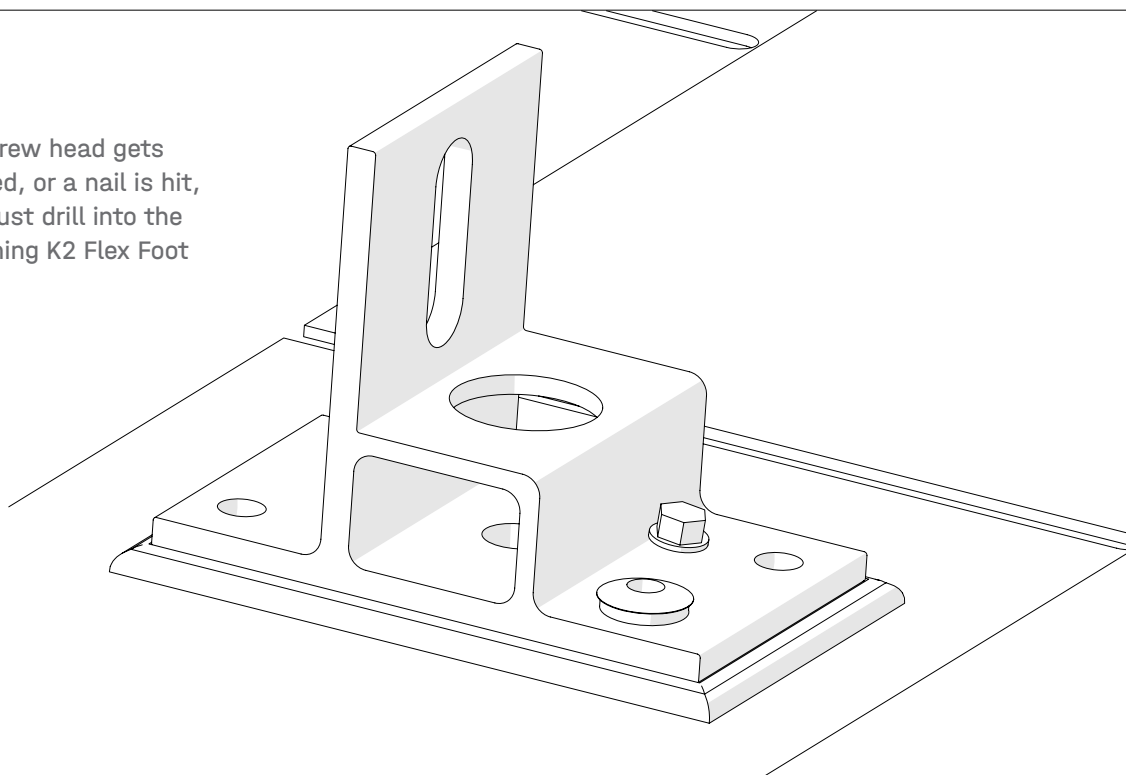
1d

! Proper torque will vary based on the characteristics of the rafter and deck. It's best practice to tighten the wood screws until the washer stops rotating. After completing process, make sure the K2 Flex Foot is securely fixed. You may verify that the screws underneath the deck panel are stained with butyl rubber. This indicates a good flashing performance. Butyl should extrude from the sides of the mount.



2d

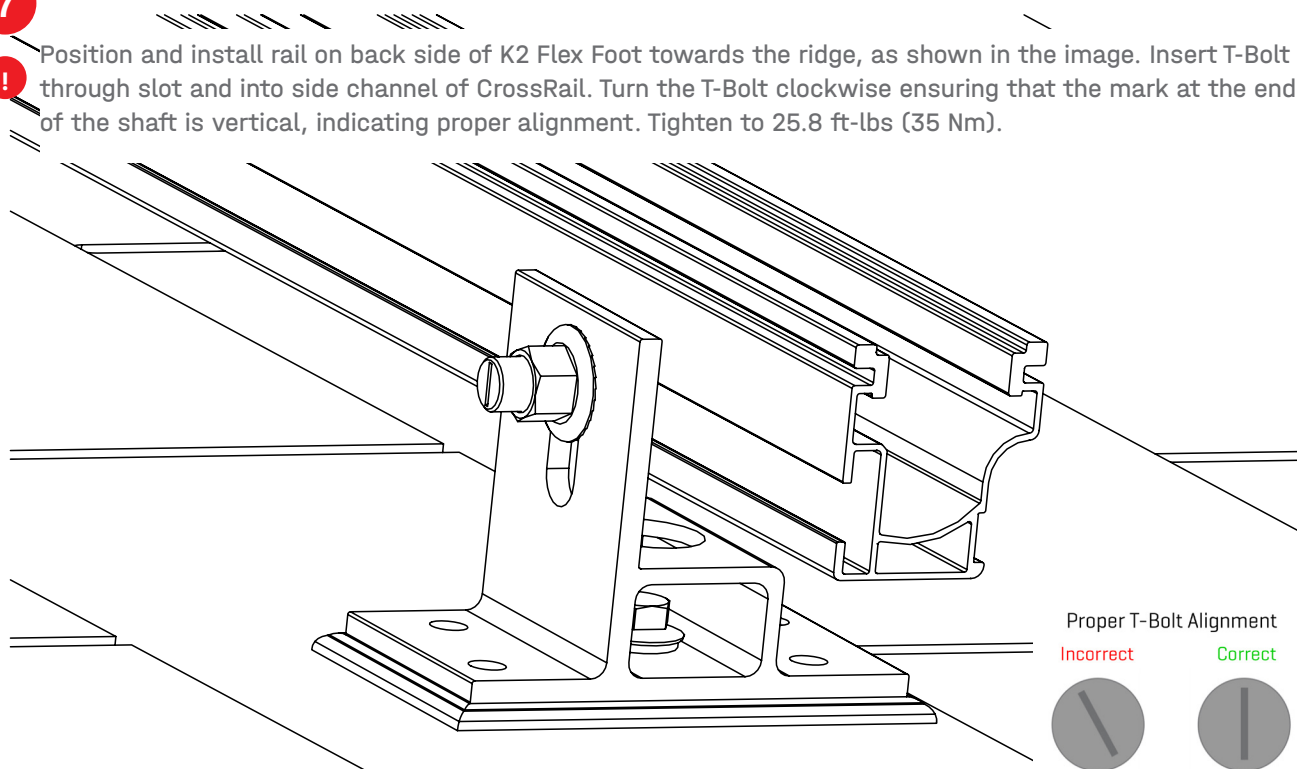
- ! If a screw head gets sheared, or a nail is hit, you must drill into the remaining K2 Flex Foot holes.



Part F: Attaching CrossRail

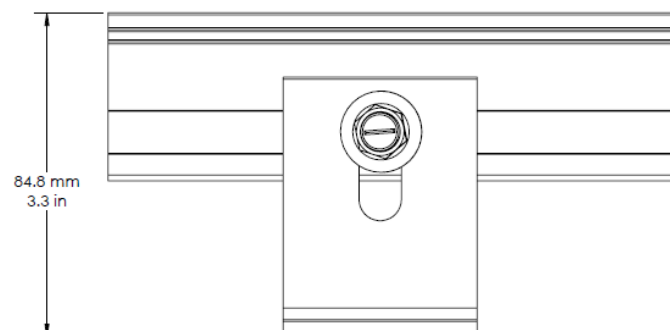
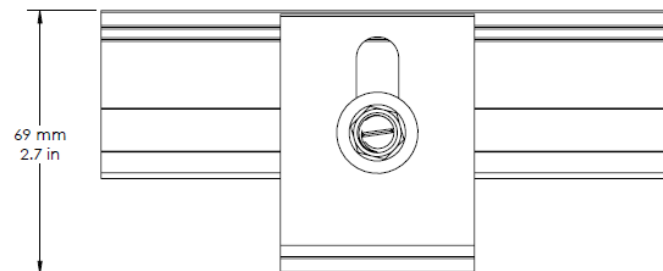
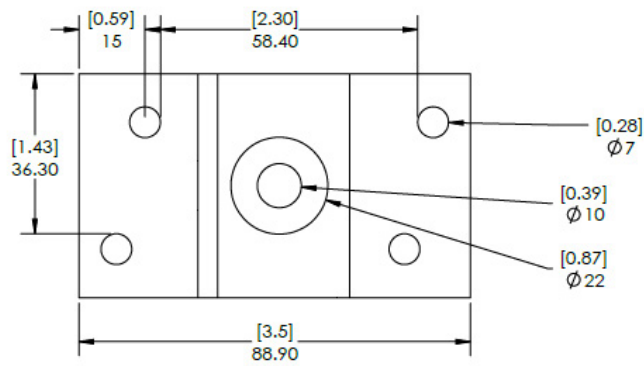
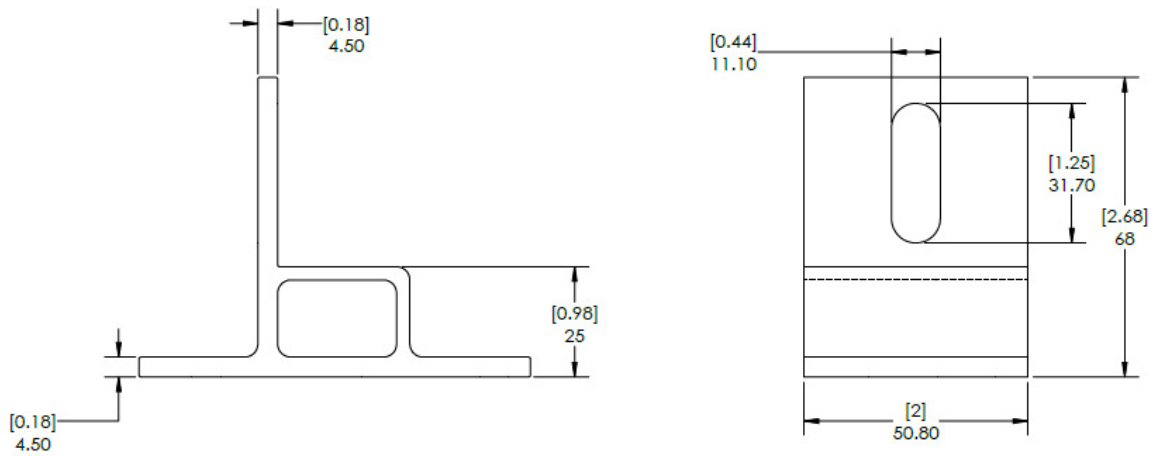
7

- ! Position and install rail on back side of K2 Flex Foot towards the ridge, as shown in the image. Insert T-Bolt through slot and into side channel of CrossRail. Turn the T-Bolt clockwise ensuring that the mark at the end of the shaft is vertical, indicating proper alignment. Tighten to 25.8 ft-lbs (35 Nm).



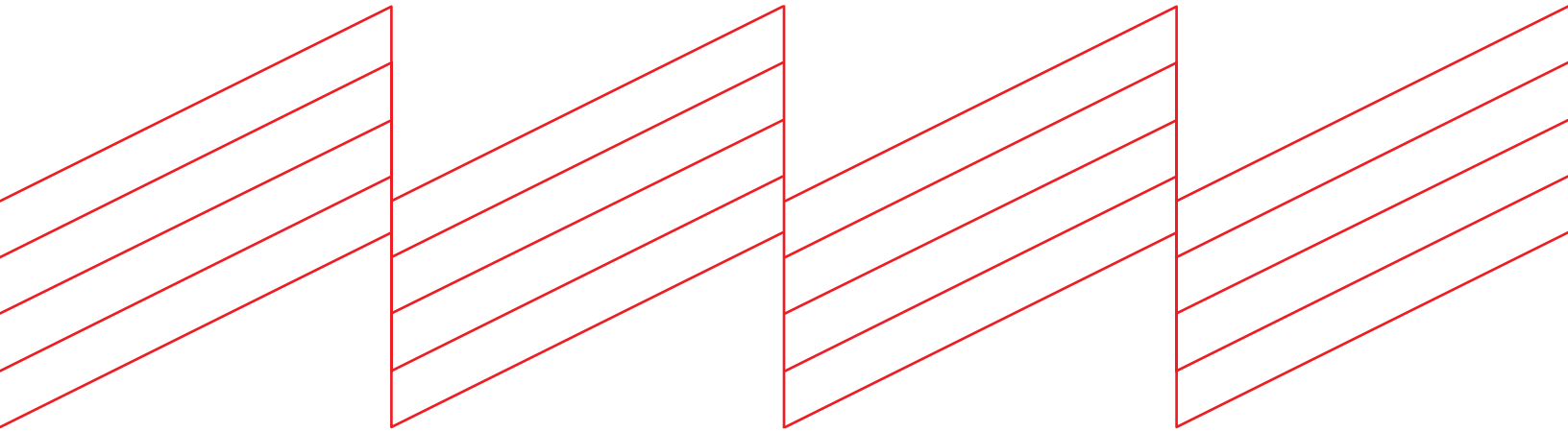
K2 Flex Foot

Units: [in] mm





Connecting Strength



K2 Systems, LLC

4665 North Ave. Suite I • Oceanside, CA 92056 •
USA +1.760.301.5300 • infous@k2-systems.com
www.k2-systems.com/en-us