

K2 Flex Foot



DATA SHEET

Rafter or Deck Attach

- / 4 screws in the corners for deck attach
- / 1 lag screw in the center for rafter attach
- / Compatible with nearly all roof types

Rail Shelf

- / Allows for easier rail support
- / Aligns CrossRail T-Bolt channel

K2 EverSeal

- / Pre-installed rubber butyl
- / 30+ years of proven water sealing technology
- / TAS 100(A) and Wind Driven Rain tested and approved



Description	Part Number
K2 Flex Foot Kit, Mill w/EverSeal	4000718
K2 Flex Foot Kit, Dark w/EverSeal	4000818

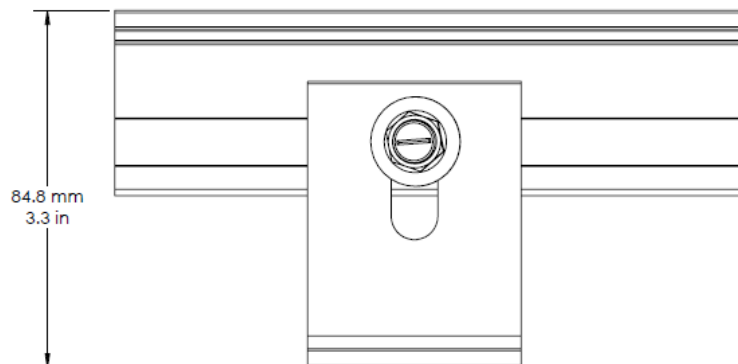
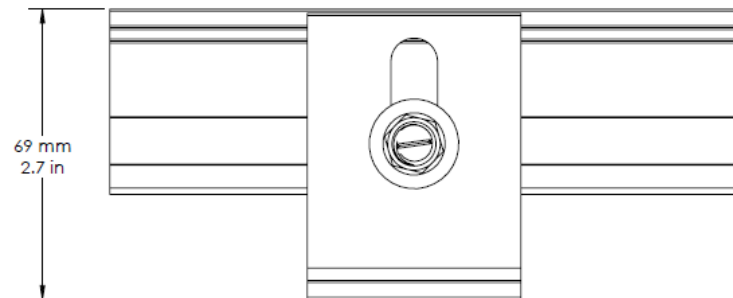
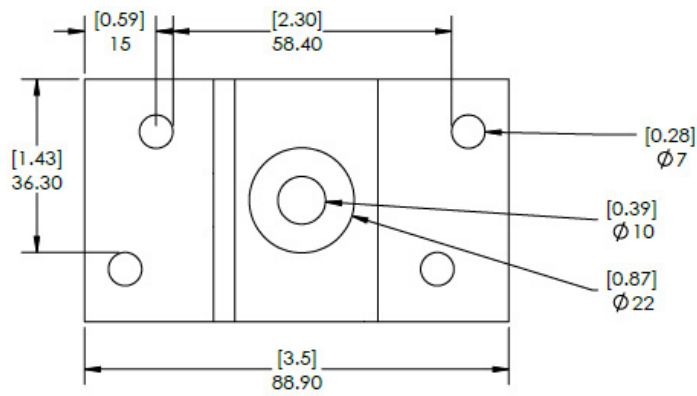
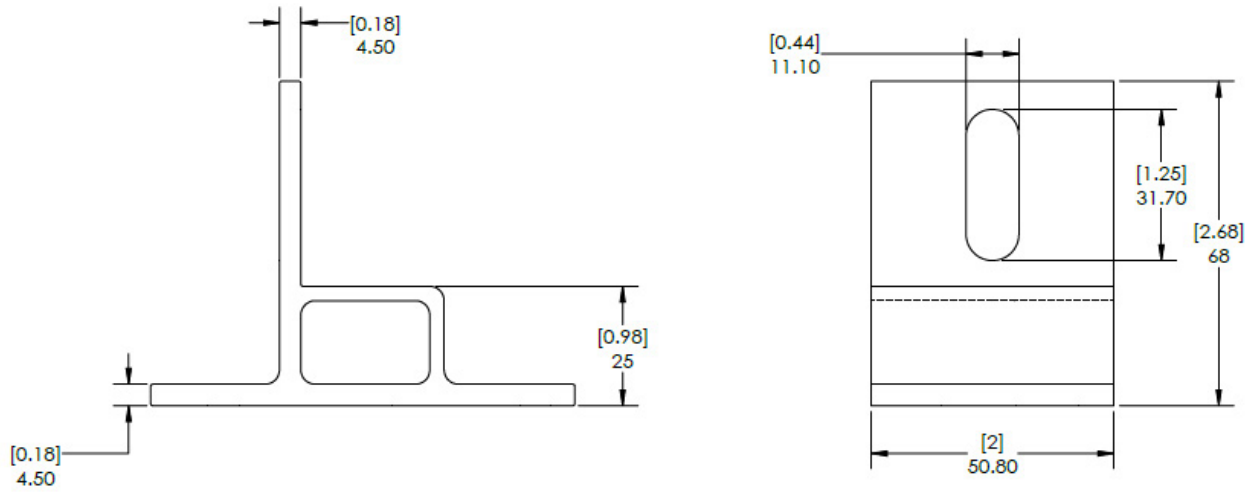
PRODUCT FEATURES



- / Rafter (1 screw) or deck (4 screws) attach options
- / Compatible with nearly all roof coverings
- / Preassembled with K2 EverSeal
- / 30+ years of proven water sealing technology
- / TAS 100(A) and Wind Driven Rain tested and approved
- / Compatible with concrete anchors
- / 360 degree rotation with lag

TECHNICAL DATA

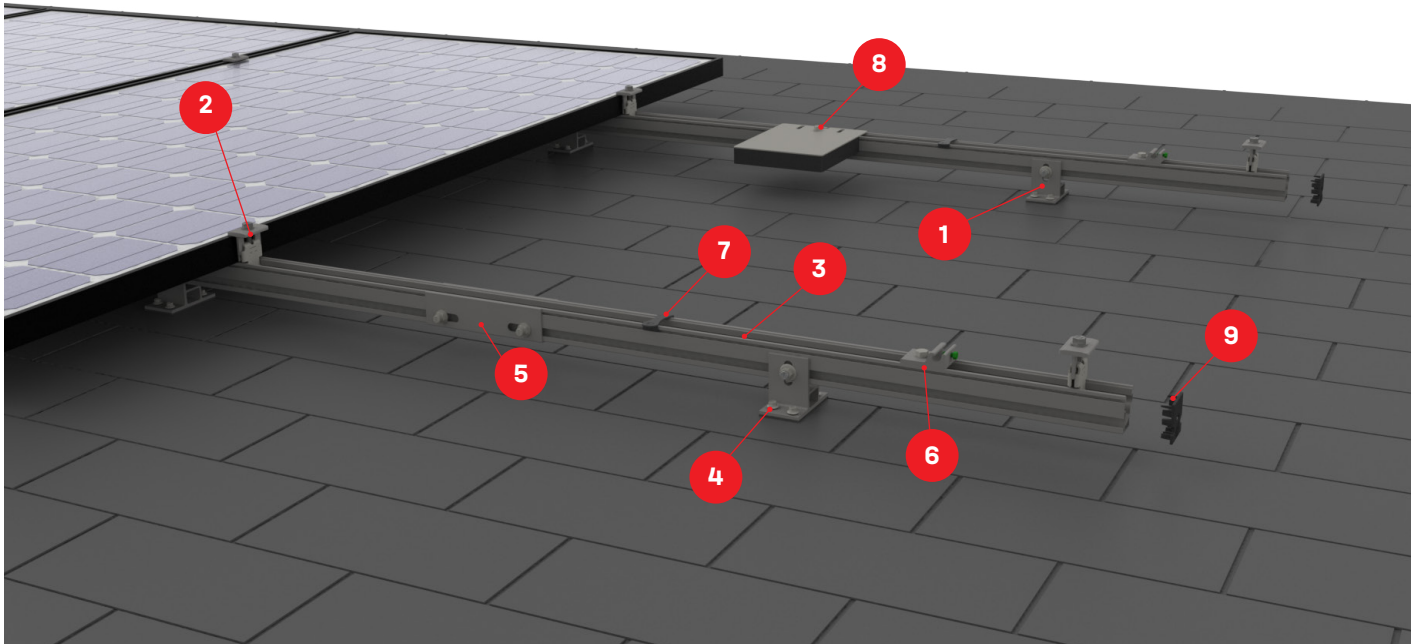
	K2 Flex Foot
Roof Type	Nearly all roof types except PVC
Material	Aluminum with stainless steel hardware and K2 EverSeal rubber butyl
Finish	Mill
Roof Connection	(4) #14 screws to deck or (1) lag screw to rafter compatible up to 3/8"
Code Compliance	UL 2703
Compatibility	CrossRail 44-X, 48-X, 48-XL, 80
Weight (Box)	13.52 lbs
Box Quantity	10



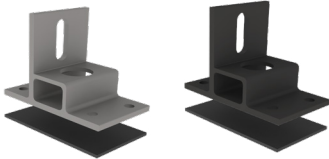
K2 Flex Foot



Assembly Instructions

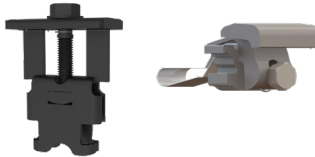


1 4000718/4000818



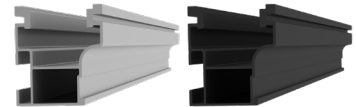
K2 Flex Foot

2 4000135/4000145
4000050-B



K2 Cross Clamp or Yeti Clamp

3 4000719, 4000720
4000721, 4000722



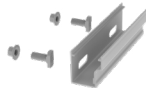
CrossRail 44-X shown & listed
Works with all CR profile

4 4000310 - Wood Screw



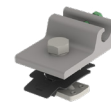
DR #14 x 3" x 5/16 Hex Head
Screw

5 4000051/4000052
4000385/4000386



Structural Rail Connector
CR 44-X or CR 48-X/48-XL

6 4000006-H



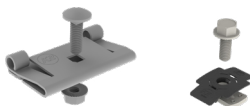
K2 Ground Lug

7 4000069
4000382
4005394



Wire Management
TC Wire Clip, SunRunner Clip,
Omega Clip

8 4000083
4000629-H



MLPE Mounting Kits
MLPE Module Frame Mount,
CR Microinverter & Opt Mount

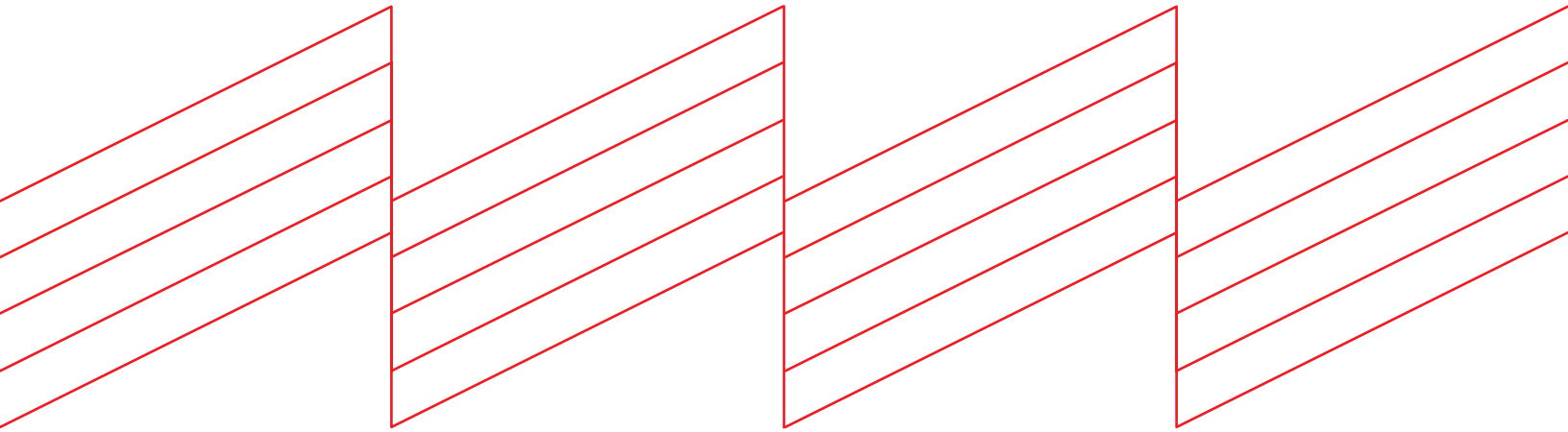
9 4000176



EndCap 44-X , K2



Connecting Strength



K2 Systems, LLC

4665 North Ave. Suite I • Oceanside, CA 92056 •
USA +1.760.301.5300 • infous@k2-systems.com
www.k2-systems.com/en-us