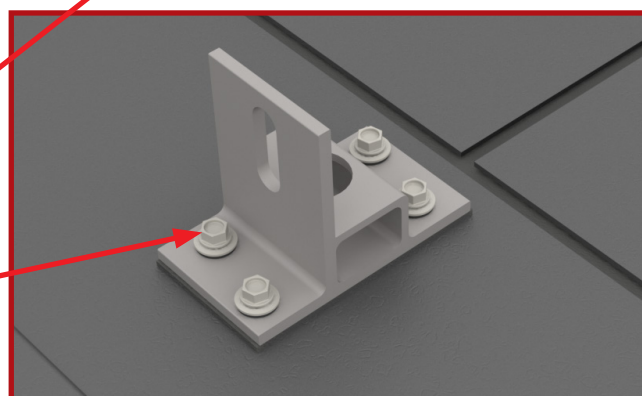
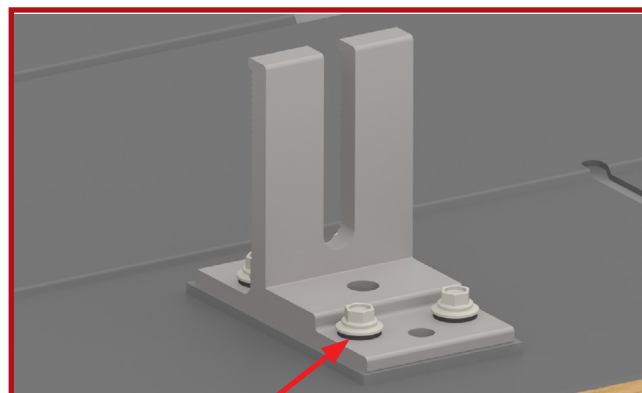
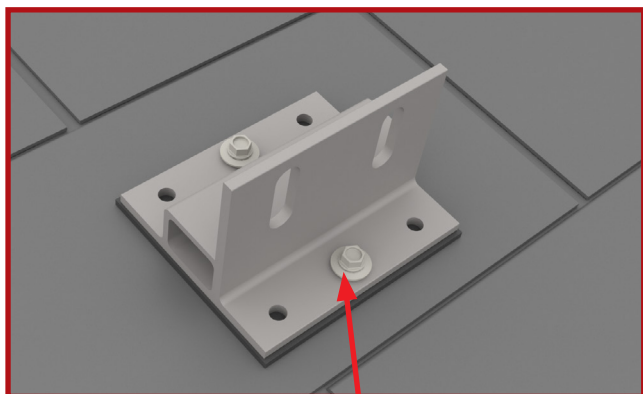


DR #14 × 3'' x 5/16

Hex Head Screw

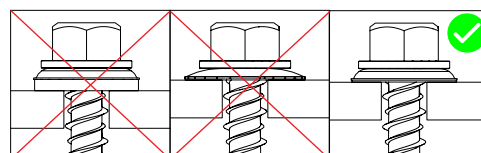


DATA SHEET



Built to Last

- / Includes EPDM washer
- / Compatible with roofs with a wooden truss and deck
- / #14 screw



PRODUCT FEATURES

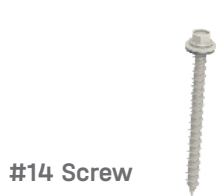


- / Self-tapping screw with EPDM washer
- / Compatible with multiple roof types
- / Can be drilled into rafter or decking
- / No pilot hole required

TECHNICAL DATA

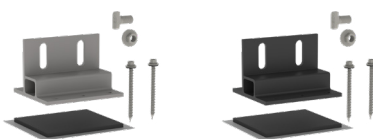
	#14 Screw
Part Number	4000310
Roof Type	Composition shingle, asphalt roofs, Tile Roofs, TPO etc.
Material	Stainless steel and EPDM
Drive	5/16" socket
Roof Connection	Drill into rafter or decking
Thread Length	3in
Thread	#14
Warranty	25 years

Compatible Roof Attachments



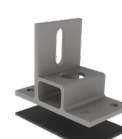
#14 Screw

Part Number	Description
4000310	DR #14 x 3" x 5/16 Hex Head Screw



Splice Foot X & XL

Part Number	Description
4000165	Splice Foot XL #14 Kit, Dark
4000300	Splice Foot XL #14 Kit, Mill



Flex Foot

Part Number	Description
4000718	K2 Flex Foot, Mill w/EverSeal



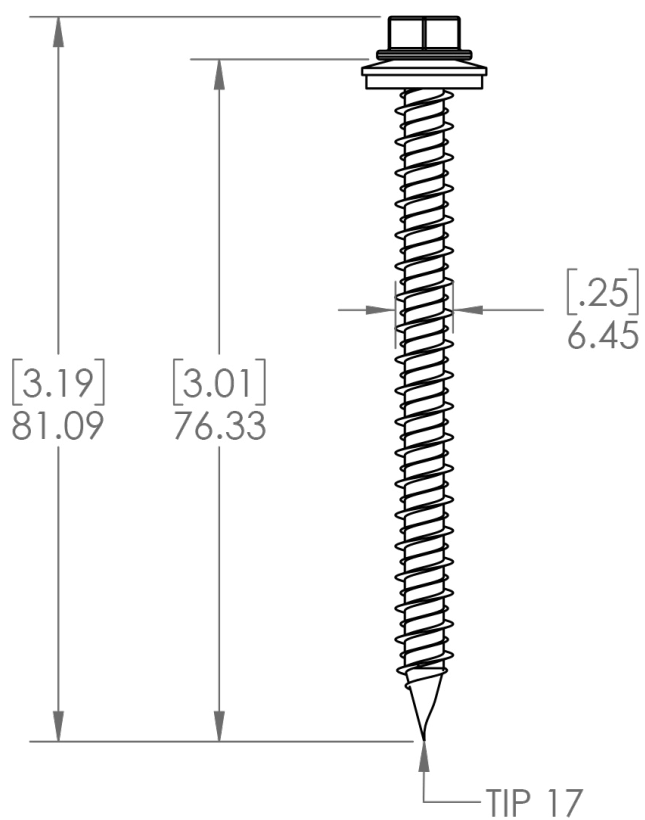
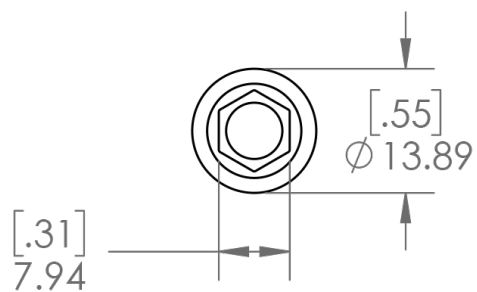
Multi Mount

Part Number	Description
4000282	K2 Multi Mount Kit, Mill
4000284	K2 Multi Mount Kit, Dark

DIMENSIONS

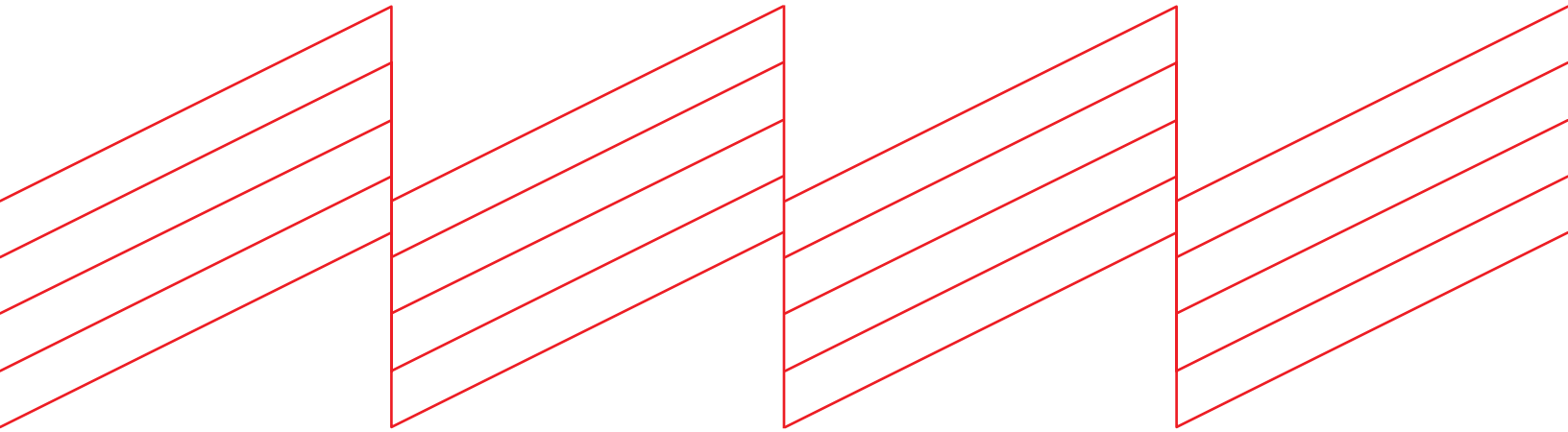


MM [IN]





Connecting Strength



K2 Systems, LLC

4665 North Ave. Suite I • Oceanside, CA 92056 •
USA +1.760.301.5300 • infous@k2-systems.com
www.k2-systems.com

#14 Screw Data Sheet V1 | 1223 • Subject to change
Product illustrations are exemplary and may differ from the original.