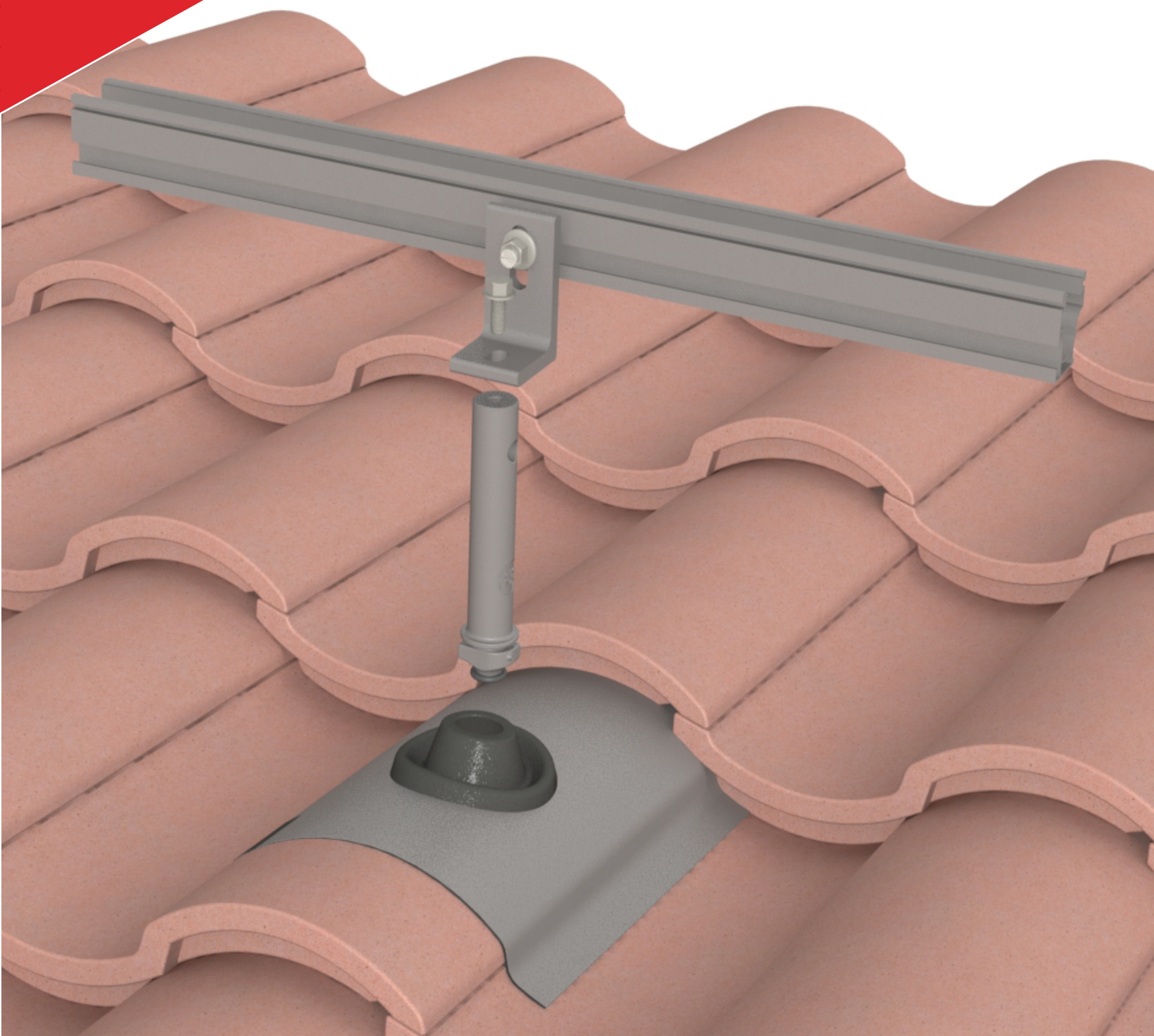


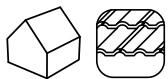
Drop N Lock Flashing w/Everseal, Kit



DATA SHEET



PRODUCT FEATURES



/A flashing that molds to most types of tile roofs.

/Quick and easy installation - Mold it by yourself, no tools required.

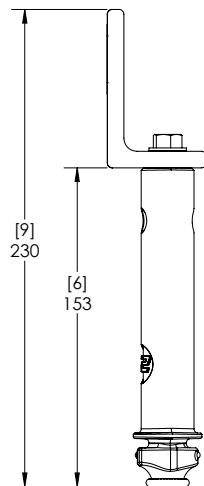
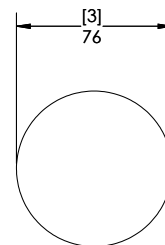
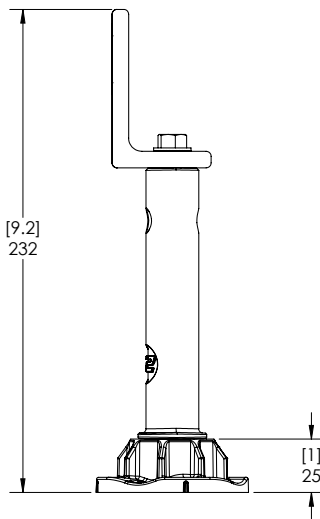
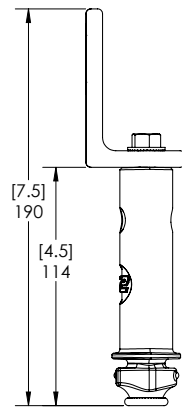
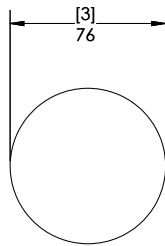
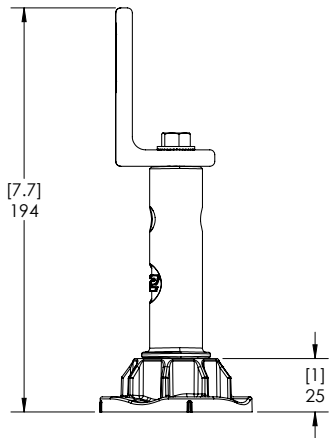
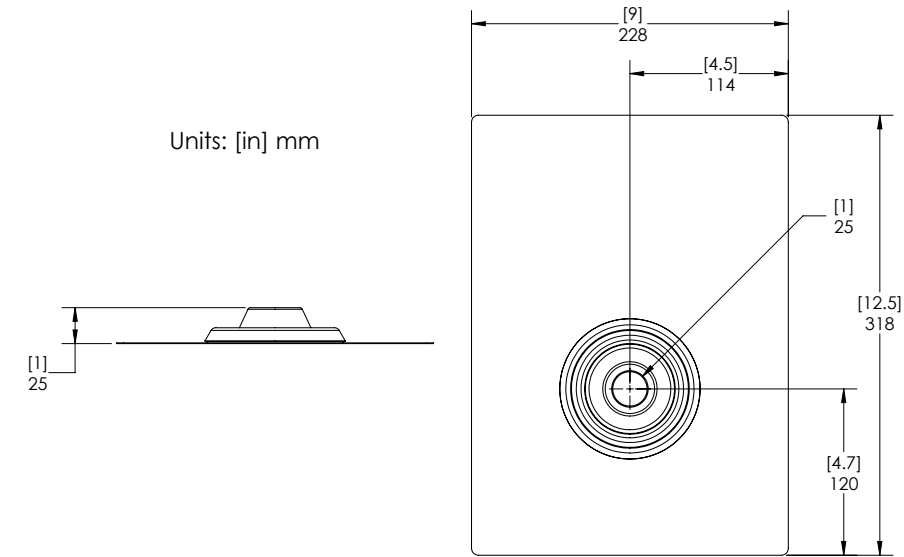
/Pre-assembled K2 Everseal provides extra layers of protection against water.

/Compatible with Drop N Lock Post 6", kit and Drop N Lock 4.5", Kit

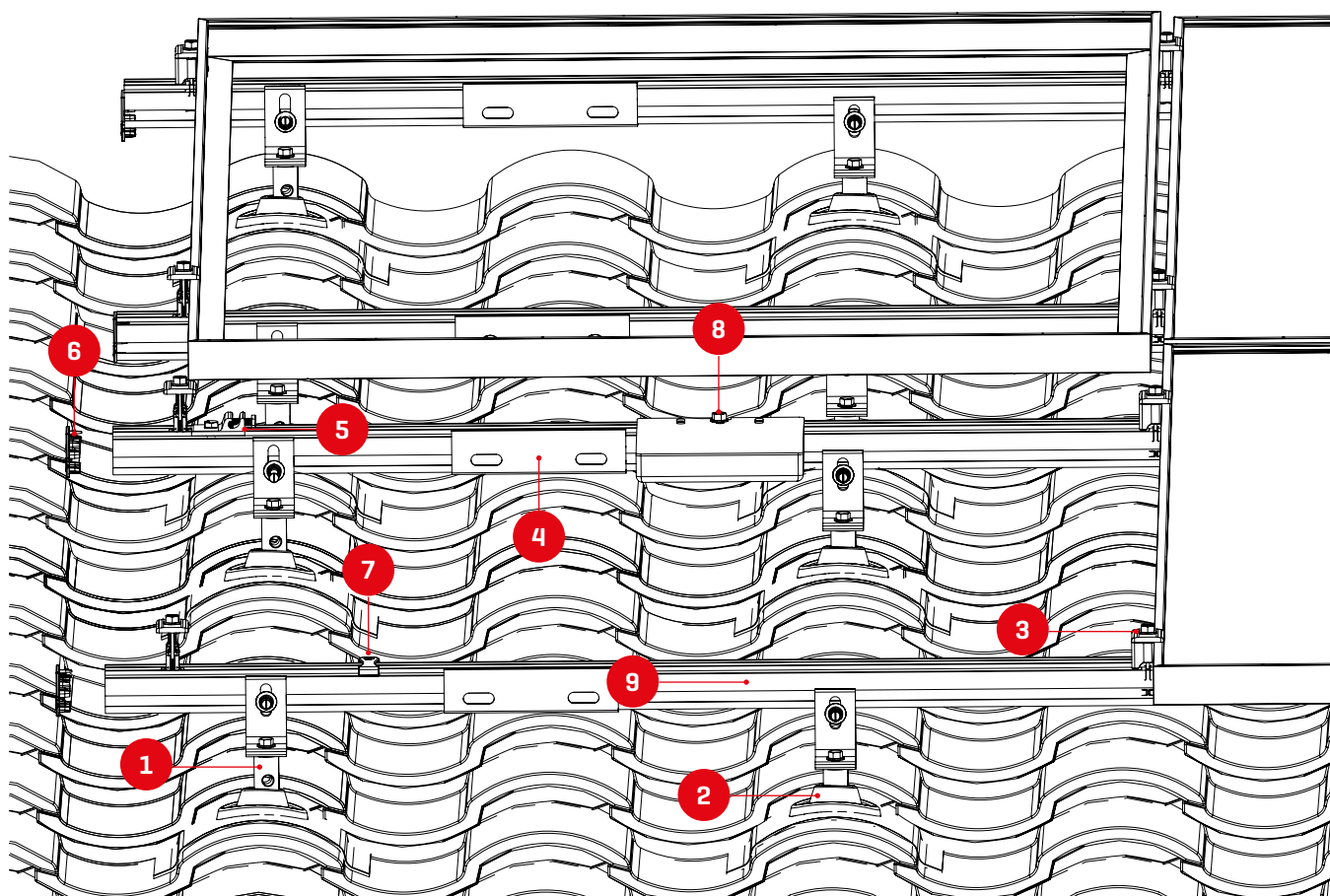
TECHNICAL DATA

	Drop N Lock Flashing w/Everseal, Kit
Part Number	4000249-B
Material	Aluminum with Plastic Rubber and Everseal
Finish	Mill
Roof Connection	K2 EverSeal
Certification	TAS 100
Compatiblilty	Drop N Lock Post 6", kit (PN 4000238) and Drop N Lock 4.5", Kit (PN 4000237)
Roof Type	Flat Tile, S Tile, W Tile

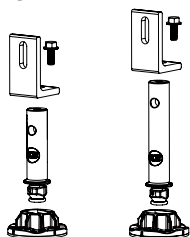
Units: mm [in]



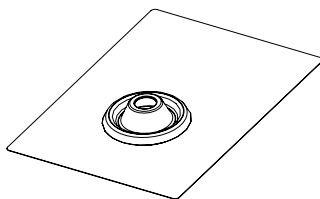
Components



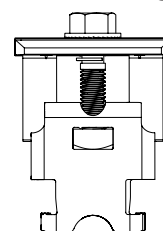
- 1** 4000237/4000238
K2 Drop N Lock Post 4.5", Kit
K2 Drop N Lock Post 6", Kit



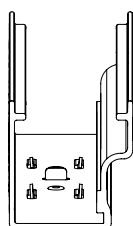
- 2** 4000249-B
Drop N Lock Flashing w/Ever-
seal, Kit



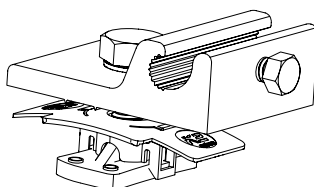
- 3** Multiple PNs
K2 Cross Clamp, 30 - 45 mm
module frame height



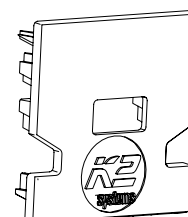
- 4** Multiple PNs
Structural Rail Connector, CR
44-X or CR 48-X/48-XL



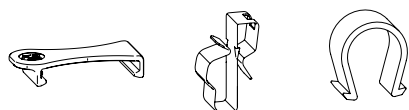
- 5** 4000006-H
K2 Ground Lug



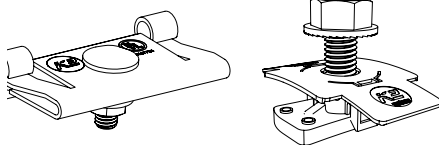
- 6** 4000176, 4000431
End Cap, CR 44-X or CR
48-X/48-XL



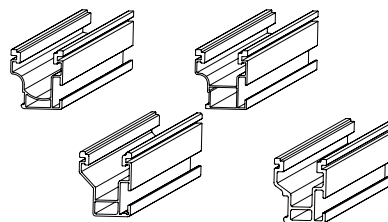
- 7** 4000069, 4000382, 4005394
Wire Management: TC Wire Clip,
 SunRunner Clip, Omega Clip



- 8** 4000083, 4000629-H
MLPE Mounting Kits
 MLPE Module Frame Mount,
 CR Microinverter & Opt Mount Kit

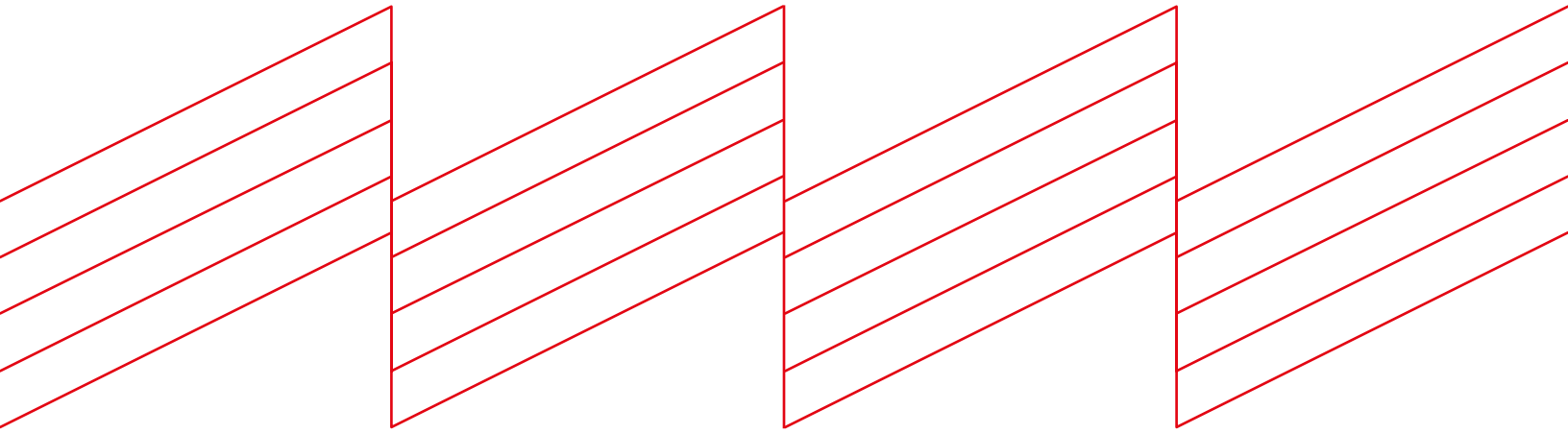


- 9** Multiple PNs
CrossRail 44-X Max, 44-X
48-X or 48-XL





Connecting Strength



K2 Systems, LLC
4665 North Ave. Suite I • Oceanside, CA 92056•
USA +1.760.301.5300 • infous@k2-systems.com
www.k2-systems.com/en.us

Drop N Lock Flashing w/Everseal, Kit • Data Sheet V1 | 0825 • Subject to change
Product illustrations are exemplary and may differ from the original.